

OLED DISPLAY MODULE

Product Specification

CUSTOMER	Standard	
PRODUCT NUMBER	DD-160128FC-1A	
CUSTOMER APPROVAL		Date

INTERNAL APPROVALS		
Product Mgr	Doc. Control	Electr. Eng
Bruno Recaldini	Anthony Perkins	Bazile Peter
Date: 09/02/10	Date: 09/02/10	Date: 09/02/10

- Approval for Specification only
- Approval for Specification and Sample

TABLE OF CONTENTS

1	MAIN FEATURES	4
2	MECHANICAL SPECIFICATION.....	5
2.1	MECHANICAL CHARACTERISTICS	5
2.2	MECHANICAL DRAWING	6
3	ELECTRICAL SPECIFICATION	7
3.1	ABSOLUTE MAXIMUM RATINGS	7
3.2	ELECTRICAL CHARACTERISTICS	8
3.3	INTERFACE PIN ASSIGNMENT	9
3.4	BLOCK DIAGRAM	11
3.5	TIMING CHARACTERISTICS.....	12
4	OPTICAL SPECIFICATION	18
4.1	OPTICAL CHARACTERISTICS	18
5	FUNCTIONAL SPECIFICATION.....	19
5.1	COMMANDS	19
5.2	POWER UP/DOWN SEQUENCE	19
5.3	RESET CIRCUIT.....	19
5.4	ACTUAL APPLICATION EXAMPLE	20
6	PACKAGING AND LABELLING SPECIFICATION.....	21
6.1	LABELLING & MARKING	21
7	QUALITY ASSURANCE SPECIFICATION	22
7.1	CONFORMITY	22
7.2	DELIVERY ASSURANCE.....	22
7.3	DEALING WITH CUSTOMER COMPLAINTS.....	26
8	RELIABILITY SPECIFICATION	27
8.1	RELIABILITY TESTS	27
8.2	LIFE TIME	27
9	HANDLING PRECAUTIONS	28
10	SUPPORTED ACCESSORIES.....	29
10.1	DUO KIT	29
10.2	TRANSITION BOARD CARD.....	29
10.3	CONNECTOR BOARD CARD	29
10.4	CONNECTOR	29

Product No.	DD-160128FC-1A	REV. C

Page	2 / 29
------	--------

REVISION RECORD

Rev.	Date	Page	Chapt.	Comment	ECR no.
A	10-Jul-06			First Issue	
B	09-Feb-10	4	1	Update panel size	
		6	2.2	Update mechanical drawing	
		9	3.3	Update pin definition	
		11	3.4	Update block diagram	
		12	3.5	Update AC characteristics	
		19	5.2	Update power up sequence	
C	28 Nov 12	29	10	Add chapter 10 supported accessories	
				Change Densitron logo at Header	

Product No.	DD-160128FC-1A	REV. C

Page	3 / 29
------	--------

1 MAIN FEATURES

ITEM	CONTENTS
Display Format	160 (RGB) x 128 Dots
Overall Dimensions	Glass 35.8 x 30.8 x 1.6 mm
Colour	262,144 Colour
Active Area	28.78 x 23.024 mm
Viewing Area	30.78 x 25.02 mm
Display Mode	Passive Matrix (1.45")
Driving Method	1/128 duty
Driver IC	SEPS525F
Operating temperature	-20 ~ +70
Storage temperature	-30 ~ +80

Product No.	DD-160128FC-1A	REV. C

Page	4 / 29
------	--------

2 MECHANICAL SPECIFICATION

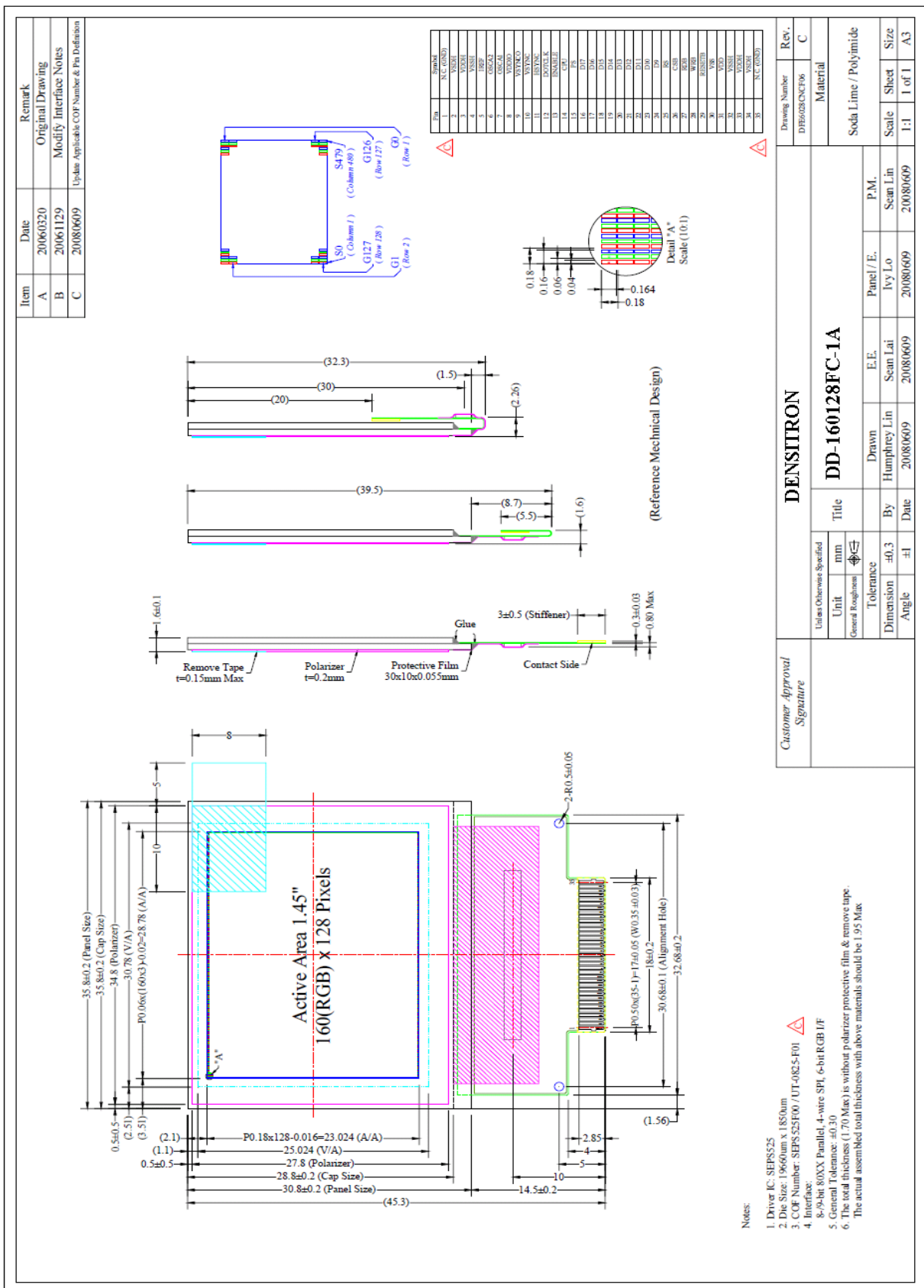
2.1 MECHANICAL CHARACTERISTICS

ITEM	CHARACTERISTIC	UNIT
Display Format	160 (RGB) x 128	Dots
Overall Dimensions	35.80 x 30.80 x 1.6	mm
Viewing Area	30.78 x 25.02	mm
Active Area	28.78 x 23.024	mm
Dot Size	0.04 x 0.164	mm
Dot Pitch	0.06 x 0.18	mm
Weight	3.6	g
IC Controller/Driver	SEPS525F (COF)	

Product No.	DD-160128FC-1A	REV. C

Page	5 / 29
------	--------

2.2 MECHANICAL DRAWING



Notes:
 1. Driver IC: SEPS525
 2. Die Size: 19660um x 1850um
 3. COP Number: SEPS525F00 / UT-0825-F01
 4. Interface: 8-96-bit 80XX Parallel, 4-wire SPI, 6-bit RGB D/F
 5. General Tolerance: ± 0.30
 6. The total thickness (1.70 Max) is without polarizer protective film & remove tape.
 The actual assembled total thickness with above materials should be 1.95 Max

Product No.	DD-160128FC-1A	REV. C
-------------	----------------	--------

Page	6 / 29
------	--------

3 ELECTRICAL SPECIFICATION

3.1 ABSOLUTE MAXIMUM RATINGS

VSS = 0 V, Ta = 25 °C

Item	Symbol	Min	Max	Unit	Note
Power Supply Voltage	V _{DD}	-0.3	4	V	Note 1, 2
Supply Voltage for I/O Pins	V _{DDIO}	-0.3	4	V	
OLED Power Supply	V _{DDH}	-0.3	16	V	
Operating Temperature	T _{op}	-30	70	°C	
Storage Temperature	T _{st}	-40	80	°C	
Static Electricity	Be sure that you are grounded when handling displays.				

Note 1: All the above voltages are on the basis of “VSS=0V”.

Note 2: When this module is used beyond the above absolute maximum ratings, permanent damage to the module may occur. Also for normal operations it’s desirable to use this module under the conditions according to Section 3.2 “Electrical Characteristics”. If this module is used beyond these conditions the module may malfunction and the reliability could deteriorate.

3.2 ELECTRICAL CHARACTERISTICS

Characteristics	Symbol	Conditions	Min	Typ	Max	Unit
Supply Voltage	V _{DD}		2.6	2.8	3.3	V
Supply Voltage x I/O pins	V _{DDIO}		1.6	2.8	3.3	V
Supply Voltage for Display	V _{DDH}	Note 3	12.5	13	13.5	V
High Level Input	V _{IH}		0.8xV _{DD}	-	V _{DD}	V
Low Level Input	V _{IL}		0	-	0.4	V
High Level Output	V _{OH}	I _{OH} = -0.4mA	V _{DD} -0.4	-	-	V
		I _{OH} = -0.4mA				
Low Level Output	V _{OL}	I _{OL} = -0.1mA	-	-	0.4	V
		I _{OL} = -0.1mA				
V _{DD} Current	I _{DD}	Note 1	-	2.5	3.5	mA
		Note 2				
V _{CC} Current	I _{CC}	Note 1	-	16	19	mA
		Note 2				

Note 1 V_{DD} = 2.8V, V_{CC} = 13V, Software initial setting follow chapter 5.4, 50% Display area turned on.

Note 2 V_{DD} = 2.8V, V_{CC} = 13V, Software initial setting follow chapter 5.4, 100% Display area turned on

Note 3 Brightness (Lbr) and driver supply voltage (V_{DDH}) could be changed to customer request.

Product No.	DD-160128FC-1A	REV. C

Page	8 / 29
------	--------

3.3 INTERFACE PIN ASSIGNMENT

No.	Symbol	I/O	Function
1	N.C. (GND)	-	<i>Reserved Pin (Supporting Pin).</i> The supporting pin can reduce the influence from stress on the function pins. This pin must be connected to external ground.
2	VSDH	P	<i>Ground of OEL Panel</i> This is a ground pin for analogue circuits. It must be connected to external ground VSDH: Segment (Data Drive)
3	VDDH	P	<i>Power Supply for OEL Panel</i> This is the most positive supply pin of the chip. This must be connected to external source.
4.	VSSH	P	<i>Ground of OEL Panel</i> This is a ground pin for analogue circuits. It must be connected to external ground VSSH: Common (Scan Drive)
5	IREF	I/O	<i>Current Reference for Brightness Adjustment</i> This pin is segment (data) current reference pin. A 68KΩ resistor should be connected between this pin and VSS.
6	OSCA2	O	<i>Fine Adjustment for Oscillation</i> The frequency is controlled by external 10KΩ resistor between OSCA1 and OSCA2. The oscillator signal is used for system clock generation. When the external clock mode is selected, OSCA1 is used external clock input
7	OSCA1	I	
8	VDDIO	P	<i>Power Supply for I/O Pin</i> This pin is a voltage supply pin. It should be match with MCU interface voltage level. It must always be equal or lower than VDD.
9	VSYNCO	O	<i>Vertical Synchronization Triggering Signal</i>
10	VSYNC	I	<i>Vertical Synchronization Input</i>
11	HSYNC	I	<i>Horizontal Synchronization Input</i>
12	COTCLK	I	<i>Dot Clock Input</i>
13	ENABLE	I	<i>Video Enable Input</i>
14	CPU	I	<i>Select the CPU type</i> Low: 80-Series MCU High: 68-Series MCU
15	PS	I	<i>Select Parallel/Serial type</i> Low: Serial Interface High: Parallel Interface
16	D17	I/O	<i>Host Data Input/Output Bus</i> These pins are 9-bit bi-directional data bus to be connected to the microprocessor's data bus.
17	D16		
18	D15		
19	D14		
20	D13		

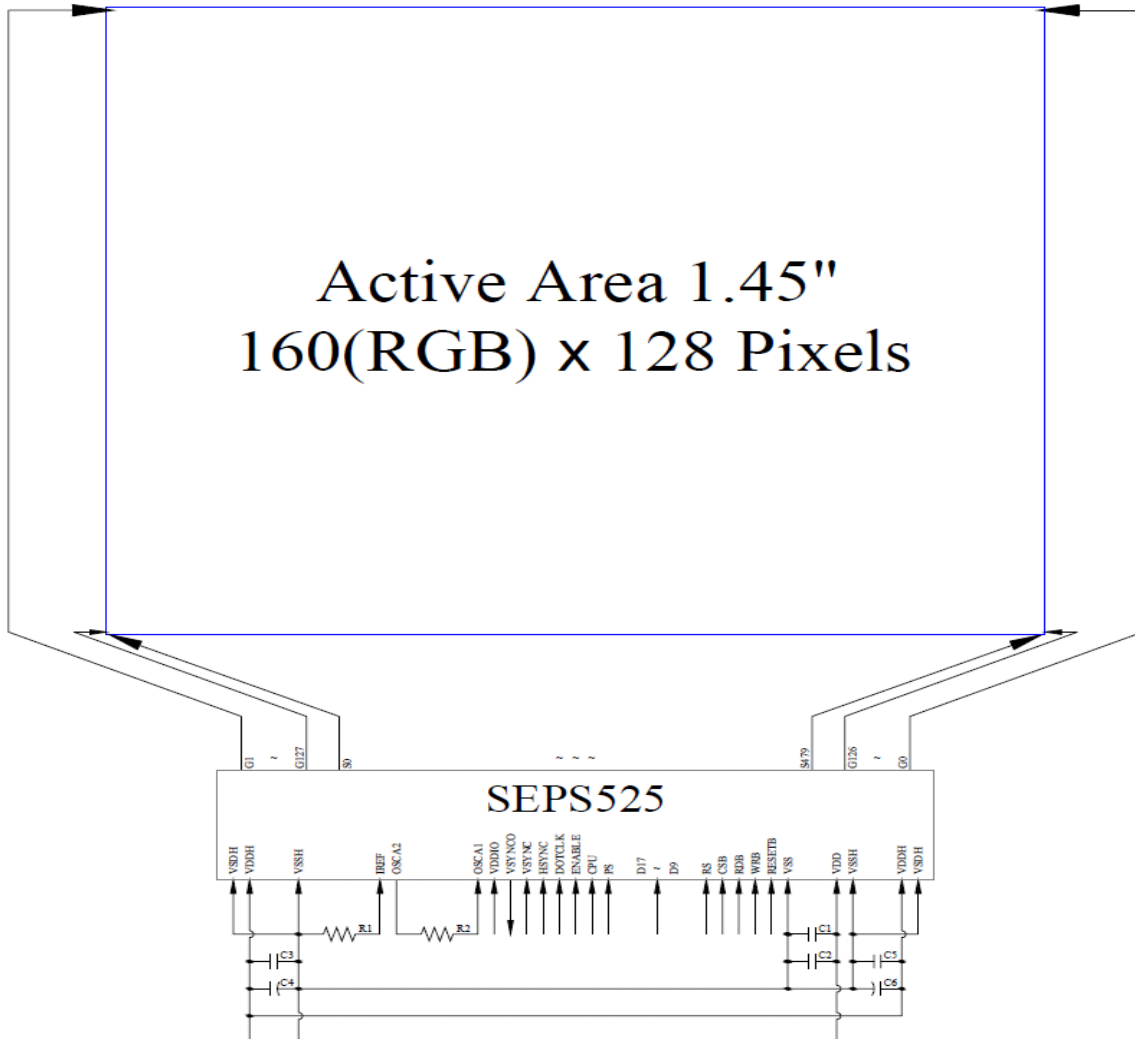
Product No.	DD-160128FC-1A	REV. C	Page	9 / 29

21	D12		<table border="1"> <tr> <td>1</td> <td>8-bit Bus: D17 to D10 9-bit Bus: D17 to D9</td> </tr> <tr> <td>0</td> <td>D[17] SCL: Synchronous Clock Input D[16] SDI: Serial Data Input D[15] SDO: Serial Data Output</td> </tr> </table>	1	8-bit Bus: D17 to D10 9-bit Bus: D17 to D9	0	D[17] SCL: Synchronous Clock Input D[16] SDI: Serial Data Input D[15] SDO: Serial Data Output
1	8-bit Bus: D17 to D10 9-bit Bus: D17 to D9						
0	D[17] SCL: Synchronous Clock Input D[16] SDI: Serial Data Input D[15] SDO: Serial Data Output						
22	D11						
23	D10						
24	D9						
25	RS	I	Data/Command Control Low: Command High: Parameter/data				
26	CSB	I	Chip Select Low: SEPS525 is selected and can be accessed High: SEPS525 is not selected and cannot be accessed				
27	RDB	I	Read or Read/Write Enable 80-System bus interface: Read strobe signal(Active Low) 68-System bus interface: Bus enable strobe (Active High) When serial mode, fix this to VDD or VSS Level				
28	WRB	I	Write or Read/Write Select 80-System bus interface: Write strobe signal(active Low) 68-System bus interface: Read (low)/write (high) select. When serial mode, fix this to VDD or VSS Level				
29	RESETB	I	Power Reset for Controller and Driver A reference. When the pin is low, initialization of the chip is executed.				
30	VSS	P	Ground of Logic Circuit This is a ground pin. It also acts as a reference for the logic pins. It must be connected to external ground				
31	VDD	P	Power Supply for Core Logic Circuit This is a voltage supply pin. It must be connected to external source.				
32	VSSH	P	Ground of OEL Panel This is a ground pin for analogue circuits. It must be connected to external ground VSSH: Common (Scan Drive)				
33	VDDH	P	Power Supply for OEL Panel This is the most positive supply pin of the chip. This must be connected to external source.				
34	VSDH	P	Ground of OEL Panel This is a ground pin for analogue circuits. It must be connected to external ground VSDH: Segment (Data Drive)				
35	N.C. (GND)	--	Reserved Pin (Supporting Pin). The supporting pin can reduce the influence from stress on the function pins. This pin must be connected to external ground.				

Product No.	DD-160128FC-1A	REV. C

Page	10 / 29
------	---------

3.4 BLOCK DIAGRAM



MCU Interface Selection: PS and CPU

Pins connected to MCU interface: D17~D9, RS, CSB, RDB, WRB, and RESETB.

Pins connected to RGB interface: D17~D9, VSYNC, HSYNC, DOTCLK, and ENABLE

C1, C3, C5: 0.1 μ F

C2: 4.7 μ F

C4, C6: 4.7 Mf /25 V Tantalum Capacitor

R1: 68 k Ω

R2: 10 k Ω

Product No.	DD-160128FC-1A	REV. C

Page	11 / 29
------	---------

3.5 TIMING CHARACTERISTICS

3.5.1 AC CHARACTERISTICS

3.5.1.1 6800-Series MPU Parallel Interface Timing Characteristics

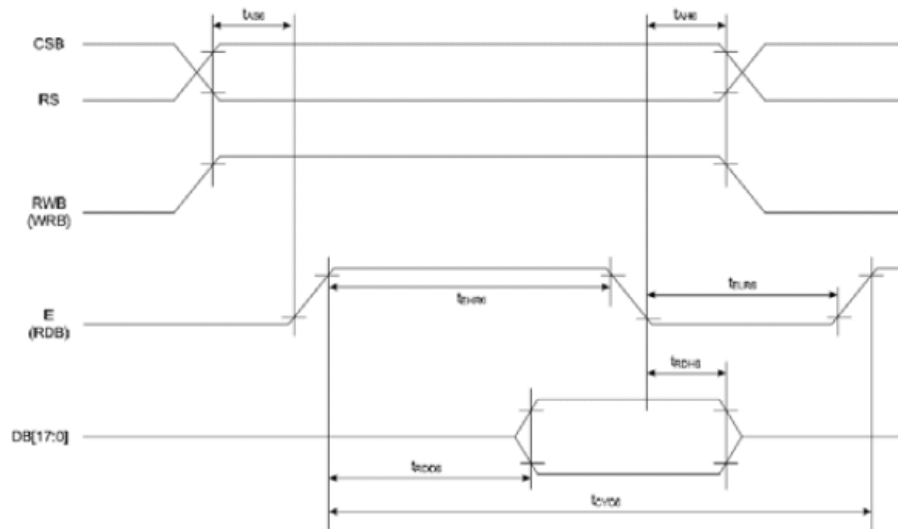
VDD = 2.8V, Ta = 25°C

Characteristics	Symbol	Min	Max	Unit	Port
Write Timing					
Address hold timing	tAH6	10	-	nS	CSB
Address setup timing	tAS6	5			RS
System cycle timing Write	tCYC6	200	-	nS	E
“L” pulse width Write	tELW6	45			
“H” pulse width	tEHW6	45			
Data setup timing	tDS6	40	-	nS	DB[17:0]
Data hold timing	tDH6	10			
Read Timing					
Address hold timing	tAH6	10	-	nS	CSB
Address setup timing	tAS6	5			RS
System cycle timing Write	tCYC6	200	-	nS	E
“L” pulse width Write	tELW6	90			
“H” pulse width	tEHW6	90			
Data setup timing (CL= 15pF)	tDS6	0	70	nS	DB[17:0]
Data hold timing (CL= 15pF)	tDH6				

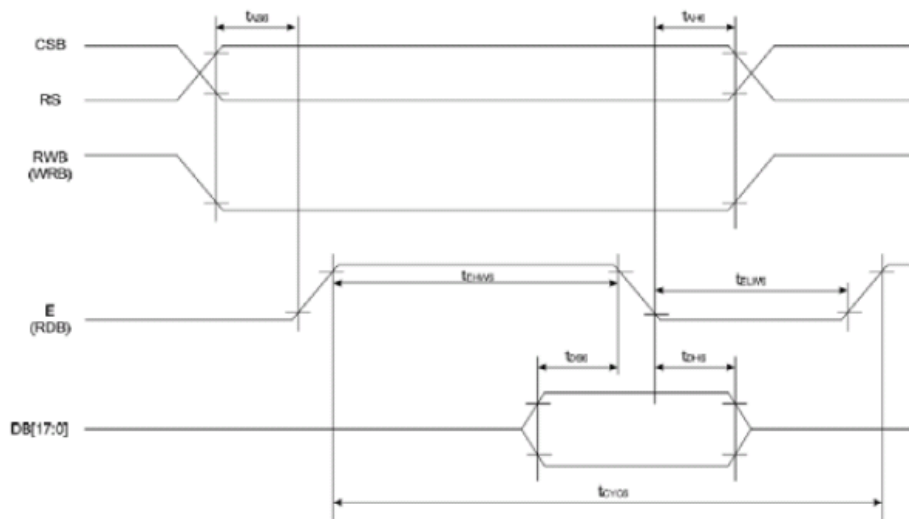
- **All the timing should be based on 10% and 90% of V_{DD}.**

Product No.	DD-160128FC-1A	REV. C

Page	12 / 29
------	---------



(Read Timing)



(Write Timing)

Product No.	DD-160128FC-1A	REV. C

Page	13 / 29
------	---------

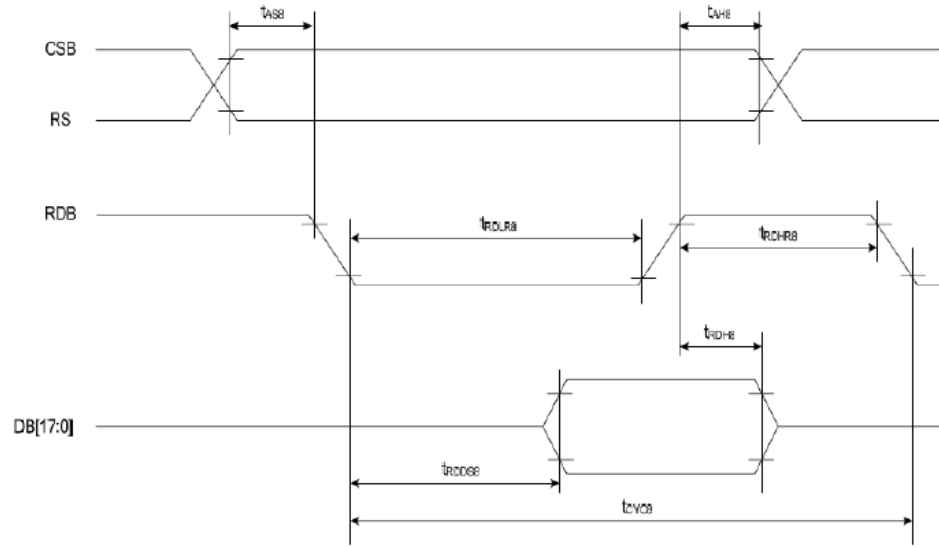
3.5.1.2 8080-Series MPU Parallel Interface Timing Characteristics

Characteristics	Symbol	Min	Max	Unit	Port
Write Timing					
Address hold timing	tAH8	5	-	nS	CSB
Address setup timing	tAS8	5			RS
System cycle timing Write	tCYC8	100	-	nS	WRB
“L” pulse width Write	tWRLW8	45			
“H” pulse width	tWRW8	45			
Data setup timing	tDS8	30	-	nS	DB[17:0]
Data hold timing	tDH6	10			
Read Timing					
Address hold timing	tAH8	5	-	nS	CSB
Address setup timing	tAS8	5			RS
System cycle timing Write	tCYC8	200	-	nS	RDB
“L” pulse width Write	tRDLR8	90			
“H” pulse width	tRDHR8	90			
Data setup timing (CL=	tDS8	0	60	nS	DB[17:0]
Data hold timing (CL= 15pF)	tDH8				

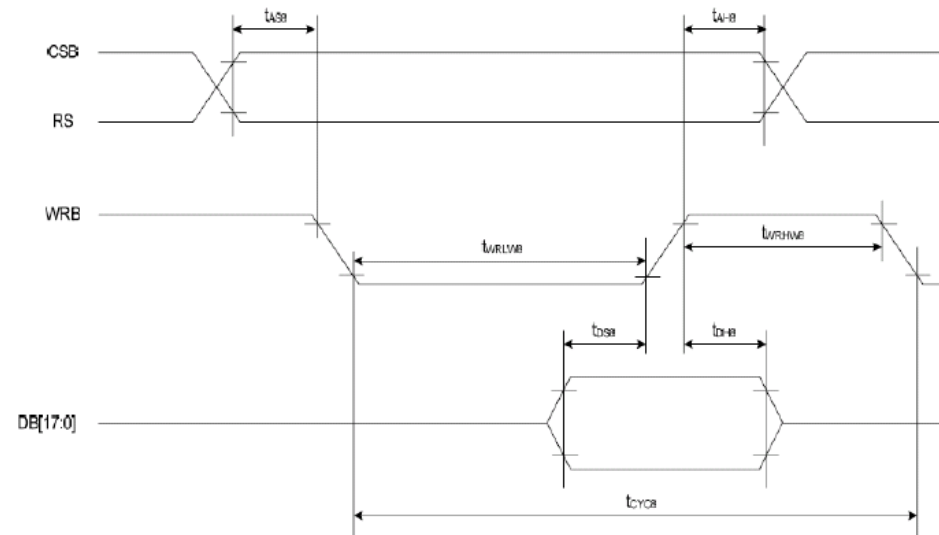
*** All the timing should be based on 10% and 90% of V_{DD}**

Product No.	DD-160128FC-1A	REV. C

Page	14 / 29
------	---------



(Read Timing)



(Write Timing)

Product No.	DD-160128FC-1A	REV. C

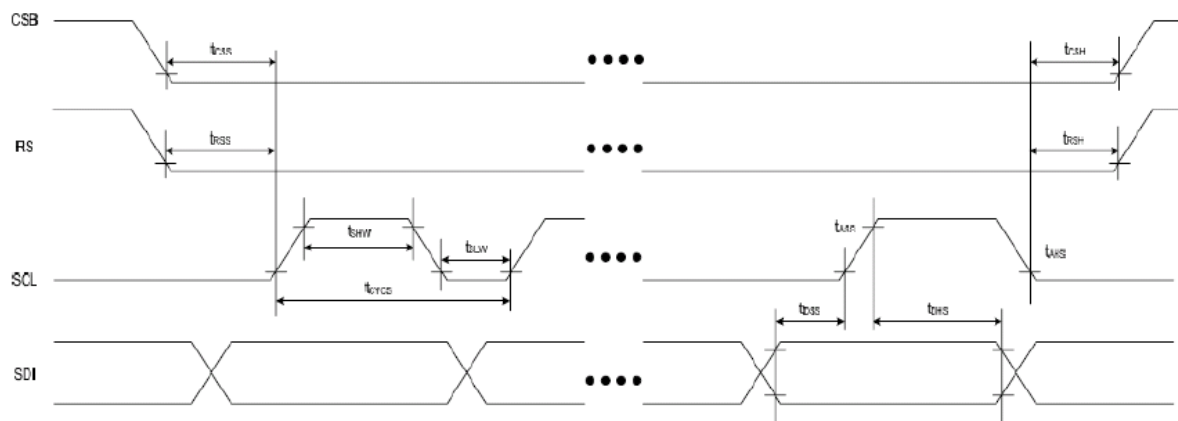
Page	15 / 29
------	---------

3.5.1.3 Serial Interface Timing Characteristics

ITEM	SYMBOL	MIN	MAX	UNIT	PORT
Serial clock cycle SCL	tCYCS	60	-	nS	SCL
“H” pulse width SCL	tSHW	25			
“L” pulse width	tSLW	25			
Data setup timing Data	tDSS	25	-	nS	SDI
Hold timing	tDHS	25			
CSB-SCL timing	tCSS	25	-	nS	CSB
CSB-hold timing	tCSH	25			
RS-SCL Timing	tRSS	25	-	ns	RS
RS-Hold Timing	tRSH	25	-	ns	

*** All the timing should be based on 10% and 90% of V_{DD}**

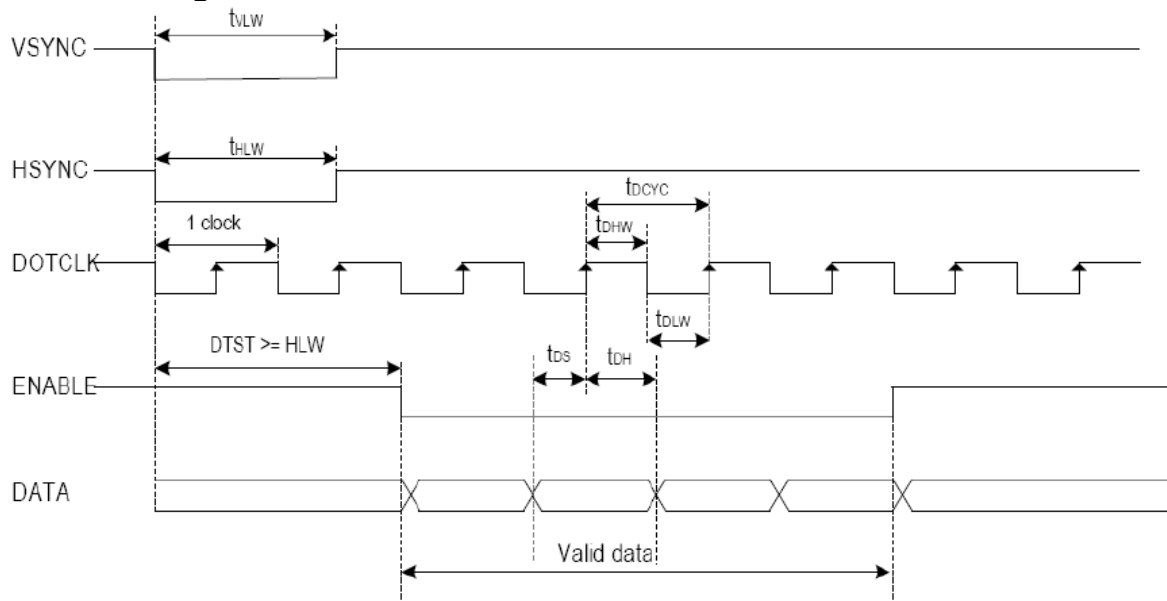
Serial Interface Timing



3.5.1.4 RGB Interface Timing Characteristics

Symbol	Item	Min	Max	Unit	Port
tDCYC	Dot Clock Cycle	100	-	ns	
tDLW	Dot "L" Pulse Width	50	-	ns	DOTCLK
tDHW	Dot "H" Pulse Width	50	-	ns	
tDS	Data Setup Timing	5	--	ns	D[17:12]
tDH	Data Hold Timing	5		ns	
tVLW	Vsync Pulse Width	1	-	DOTCLK	VSYNC
tHLW	Hsync Pulse Width	1	-	DOTCLK	HSYNC

* All the timing should be based on 10% and 90% of V_{DD}



DTST: Setup Time for Data Transmission

* VSYNC, HSYNC, ENABLE, and D[17:12] should be transmitted by 3 clocks for one pixel (RGB).

Product No.	DD-160128FC-1A	REV. C

Page	17 / 29
------	---------

4 OPTICAL SPECIFICATION

4.1 OPTICAL CHARACTERISTICS

Characteristics	Symbol	Condition	Min	Typ	Max	Unit
Brightness(White)	L _{br}	Display Average Note 1	75	100	-	cd/m ²
C.I.E.(White)	(X)		0.26	0.30	0.34	-
	(Y)		0.29	0.33	0.37	
C.I.E.(Red)	(X)		0.60	0.64	0.68	-
	(Y)		0.30	0.34	0.38	
C.I.E.(Green)	(X)		0.27	0.31	0.35	-
	(Y)		0.58	0.62	0.66	
C.I.E.(Blue)	(X)		0.10	0.14	0.18	-
	(Y)		0.12	0.16	0.20	
Dark Room Contrast	CR		-	>2000:1	-	-
Viewing Angle			>160	-	-	degree

Optical measurement, follow the software initial setting on chapter 5.4

Note 1: Brightness (L_{br}) and driver supply voltage (VCC) could be changed to customer request.

Product No.	DD-160128FC-1A	REV. C

Page	18 / 29
------	---------

5 FUNCTIONAL SPECIFICATION

5.1 COMMANDS

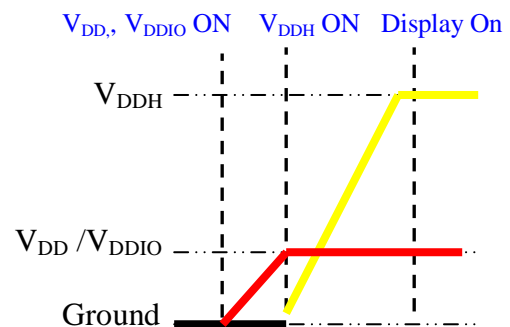
Please refer to the Technical Manual for the SEPS525F

5.2 POWER UP/DOWN SEQUENCE

To protect panel and extend the panel lifetime, the driver IC power up/down routine should include a delay period between high voltage and low voltage power sources during turn on/off. It gives the panel enough time to complete the action of charge and discharge before/after the operation.

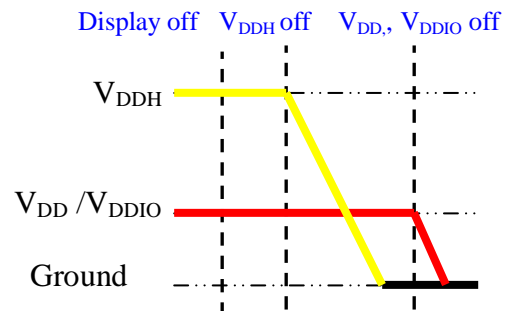
5.2.1 POWER UP SEQUENCE

1. Power up V_{DD} & V_{DDIO}
2. Send Display off command
3. Initialization
4. Clear Screen
5. Power up V_{DDH}
6. Delay 100ms (When V_{DDH} is stable)
7. Send Display on command



5.2.2 POWER DOWN SEQUENCE

1. Send Display off command
2. Power down V_{DDH}
3. Delay 100ms
(When V_{DDH} reach 0 and panel is completely discharges)
4. Power down V_{DD} & V_{DDIO}



5.3 RESET CIRCUIT

When RESETB input is low, the chip is initialized with the following status:

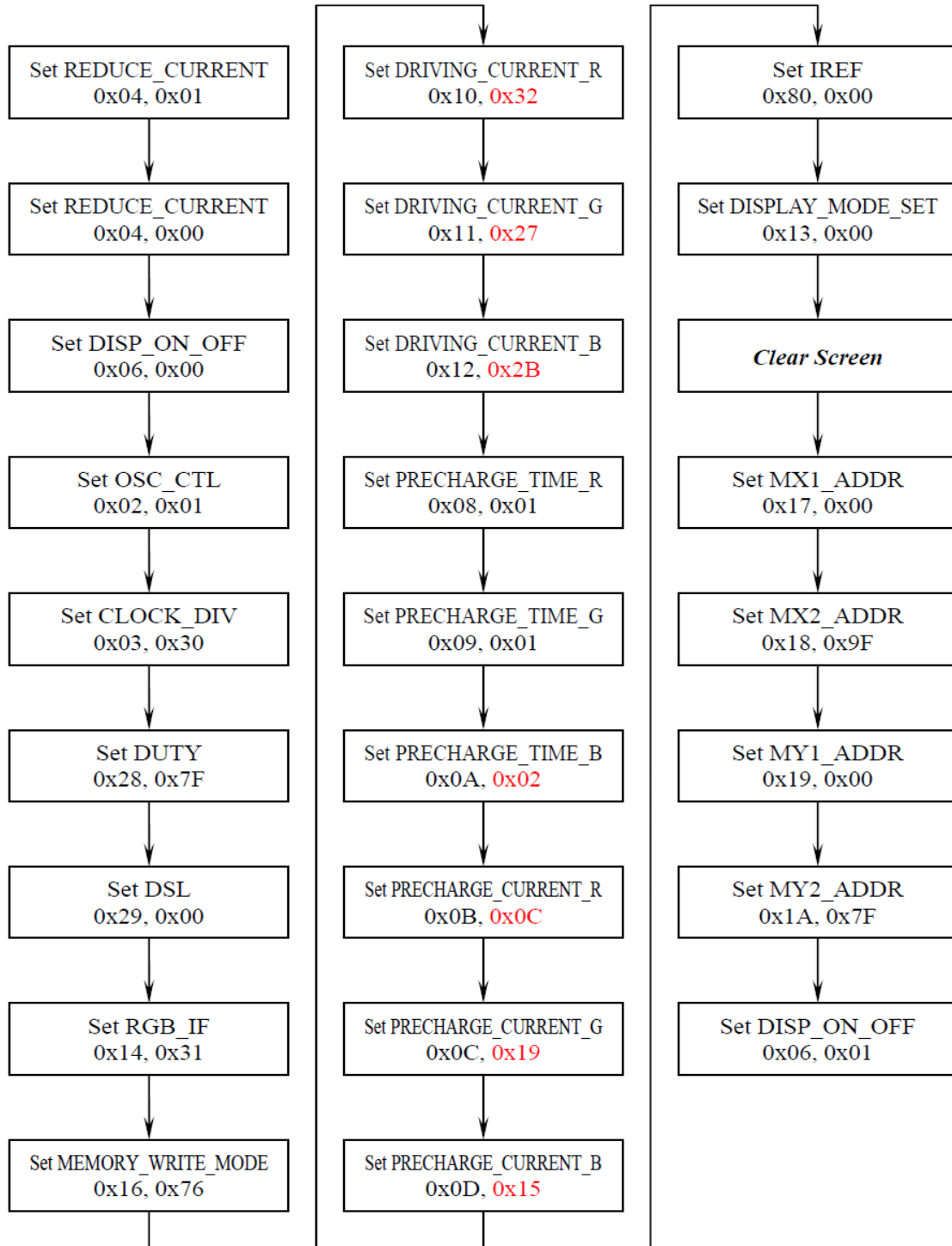
1. Frame frequency: 90Hz
2. OSC: internal OSC ON
3. DDRAM write horizontal address: MX1 = 00h, MX2 = 9Fh
4. DDRAM write vertical address: MY1 = 00h, MY2 = 7Fh
5. Display data RAM write: HC = 1, VC = 1, HV = 0
6. RGB data swap: OFF
7. Row scan shift direction: G0, G1, ..., G126, G127
8. Column data shift direction: S0, S1, ..., S478, S479
9. Display ON/OFF: OFF
10. Panel display size: FX1 = 00h, FX2 = 9Fh, FY1 = 00h, FY2 = 7Fh
11. Display data RAM read column/row address: FAC = 00h, FAR = 00h
12. Pre-charge time(R/G/B): 0 clock
13. Pre-charge current(R/G/B): 0 uA
14. Driving current(R/G/B): 0 uA

Product No.	DD-160128FC-1A	REV. C
-------------	----------------	--------

Page	19 / 29
------	---------

5.4 ACTUAL APPLICATION EXAMPLE

<Initialization>



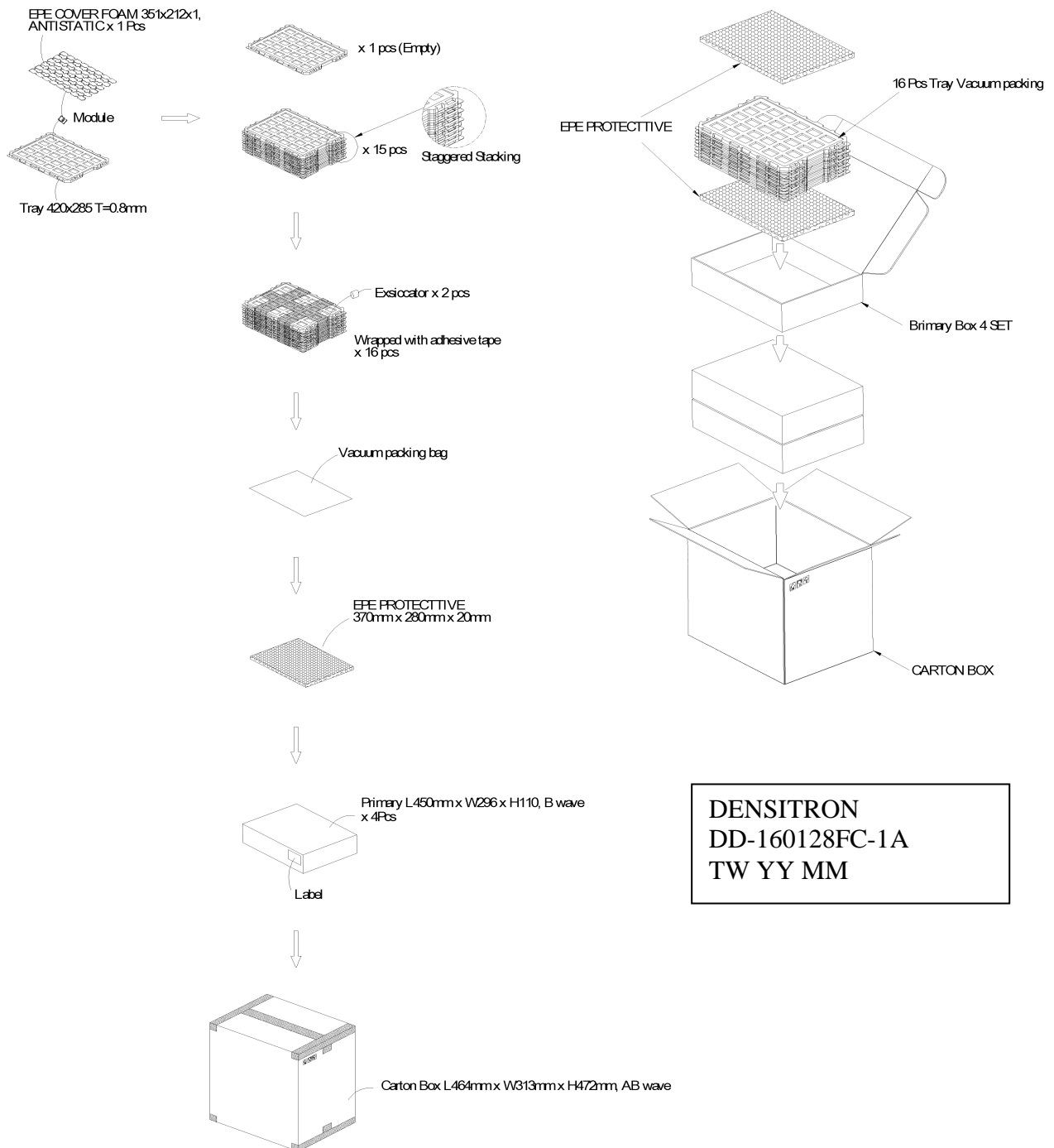
If the noise is accidentally occurred at the displaying window during the operation, please reset the display in order to recover the display function.

Product No.	DD-160128FC-1A	REV. C

Page	20 / 29
------	---------

6 PACKAGING AND LABELLING SPECIFICATION

6.1 LABELLING & MARKING



Product No.	DD-160128FC-1A	REV. C

Page	21 / 29
------	---------

7 QUALITY ASSURANCE SPECIFICATION

7.1 CONFORMITY

The performance, function and reliability of the shipped products conform to the Product Specification.

7.2 DELIVERY ASSURANCE

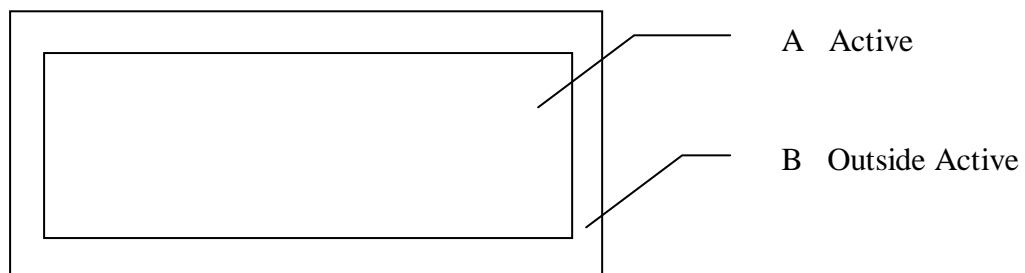
7.2.1 DELIVERY INSPECTION STANDARDS

MIL-STD-105E, general inspection level II, single sampling level;
IPC-AA610 rev. C, class 2 electronic assemblies standard

The quality assurance levels are shown below:

Class	AQL (%)
Critical defect	0.5%
Major defect	1.0%
Minor defect	1.5%
TOTAL	2.0%

7.2.2 Zone definition



7.2.3 Visual inspection

Test and measurement to be conducted under following conditions :

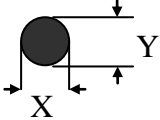
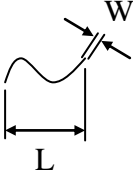
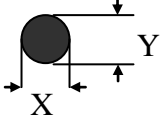
Temperature:	23±5°C
Humidity:	55±15%RH
Fluorescent lamp:	30 W
Distance between the Panel & Eyes of the Inspector:	≥30cm
Distance between the Panel & the lamp:	≥50cm

Product No.	DD-160128FC-1A	REV. C

Page	22 / 29
------	---------

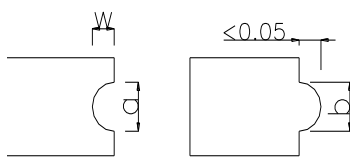
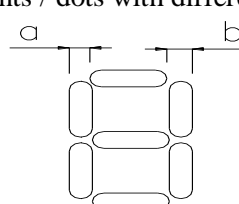
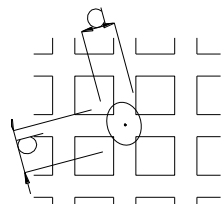
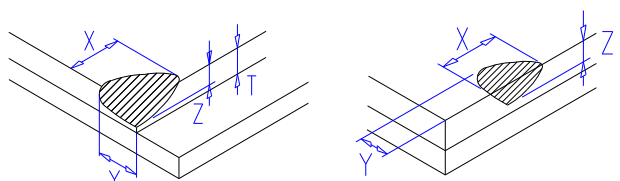
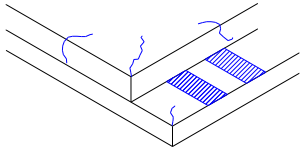
7.2.4 Standard of appearance inspection

Units: mm

Class	Item	Criteria																																	
Minor	Packing & Label	Outside & inside package Presence of product no., lot no., quantity																																	
Critical		Product must not be mixed with others and quantity must not be different from that indicated on the label																																	
Major	Dimension	Product dimensions must be according to specification and drawing																																	
Major	Electrical	Product electrical characteristics must be according to specification																																	
Critical	OLED Display	Missing lines, short circuits or wrong patterns on OLED display are not allowed																																	
Minor	Black spot, white spot, dust	<p>Round type: as per following drawing $\varnothing = (X+Y)/2$</p>  <table border="1" style="margin-left: auto; margin-right: auto;"> <thead> <tr> <th colspan="3">Acceptable quantity</th> </tr> <tr> <th>Size</th> <th>Zone A</th> <th>Zone B</th> </tr> </thead> <tbody> <tr> <td>$\varnothing < 0.1$</td> <td>Any number</td> <td rowspan="4">Any number</td> </tr> <tr> <td>$0.1 < \varnothing < 0.2$</td> <td>3</td> </tr> <tr> <td>$0.2 < \varnothing < 0.25$</td> <td>1</td> </tr> <tr> <td>$0.25 < \varnothing$</td> <td>0</td> </tr> </tbody> </table> <p>Line type: as per following drawing</p>  <table border="1" style="margin-left: auto; margin-right: auto;"> <thead> <tr> <th colspan="4">Acceptable quantity</th> </tr> <tr> <th>Length</th> <th>Width</th> <th>Zone A</th> <th>Zone B</th> </tr> </thead> <tbody> <tr> <td>--</td> <td>$W \leq 0.05$</td> <td>Any number</td> <td rowspan="3">Any number</td> </tr> <tr> <td>$L \leq 2.0$</td> <td>$W \leq 0.1$</td> <td>3</td> </tr> <tr> <td>$L > 2.0$</td> <td></td> <td>0</td> </tr> </tbody> </table> <p style="text-align: center;">Total acceptable quantity: 3</p>	Acceptable quantity			Size	Zone A	Zone B	$\varnothing < 0.1$	Any number	Any number	$0.1 < \varnothing < 0.2$	3	$0.2 < \varnothing < 0.25$	1	$0.25 < \varnothing$	0	Acceptable quantity				Length	Width	Zone A	Zone B	--	$W \leq 0.05$	Any number	Any number	$L \leq 2.0$	$W \leq 0.1$	3	$L > 2.0$		0
Acceptable quantity																																			
Size	Zone A	Zone B																																	
$\varnothing < 0.1$	Any number	Any number																																	
$0.1 < \varnothing < 0.2$	3																																		
$0.2 < \varnothing < 0.25$	1																																		
$0.25 < \varnothing$	0																																		
Acceptable quantity																																			
Length	Width	Zone A	Zone B																																
--	$W \leq 0.05$	Any number	Any number																																
$L \leq 2.0$	$W \leq 0.1$	3																																	
$L > 2.0$		0																																	
Minor	Polariser scratch	Scratch on protective film is permitted Scratch on polariser: same as No. 1																																	
Minor	Polariser bubble	<p>$\varnothing = (X+Y)/2$</p>  <table border="1" style="margin-left: auto; margin-right: auto;"> <thead> <tr> <th colspan="3">Acceptable quantity</th> </tr> <tr> <th>Size</th> <th>Zone A</th> <th>Zone B</th> </tr> </thead> <tbody> <tr> <td>$\varnothing < 0.5$</td> <td>Any number</td> <td rowspan="2">Any number</td> </tr> <tr> <td>$\varnothing > 0.5$</td> <td>0</td> </tr> </tbody> </table>	Acceptable quantity			Size	Zone A	Zone B	$\varnothing < 0.5$	Any number	Any number	$\varnothing > 0.5$	0																						
Acceptable quantity																																			
Size	Zone A	Zone B																																	
$\varnothing < 0.5$	Any number	Any number																																	
$\varnothing > 0.5$	0																																		

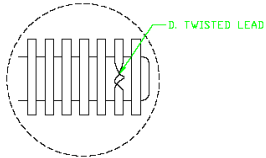
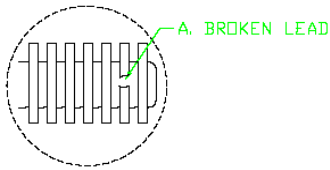
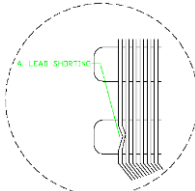
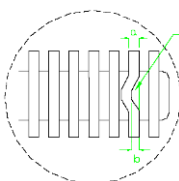
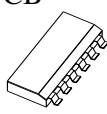
Product No.	DD-160128FC-1A	REV. C

Page	23 / 29
------	---------

Class	Item	Criteria																												
Minor	Segment deformation	<p>1b. Pin hole on dot matrix display</p>  <table border="1" data-bbox="1005 380 1404 560"> <thead> <tr> <th colspan="2">Acceptable quantity</th> </tr> <tr> <th>Size</th> <th></th> </tr> </thead> <tbody> <tr> <td>a,b<0.1</td> <td>Any number</td> </tr> <tr> <td>(a+b)/2≤0.1</td> <td>Any number</td> </tr> <tr> <td>0.5<∅<1.0</td> <td>3</td> </tr> </tbody> </table> <p>Total acceptable quantity: 7</p> <p>2. Segments / dots with different width</p>  <table border="1" data-bbox="1005 761 1404 873"> <thead> <tr> <th colspan="2">Acceptable</th> </tr> </thead> <tbody> <tr> <td>a≥b</td> <td>a/b≤4/3</td> </tr> <tr> <td>a<b</td> <td>a/b>4/3</td> </tr> </tbody> </table> <p>3. Alignment layer defect ∅ = (a+b)/2</p>  <table border="1" data-bbox="1005 940 1404 1164"> <thead> <tr> <th colspan="2">Acceptable quantity</th> </tr> <tr> <th>Size</th> <th></th> </tr> </thead> <tbody> <tr> <td>∅≤0.4</td> <td>Any number</td> </tr> <tr> <td>0.4<∅≤1.0</td> <td>5</td> </tr> <tr> <td>1.0<∅≤1.5</td> <td>3</td> </tr> <tr> <td>1.5<∅≤2.0</td> <td>2</td> </tr> </tbody> </table> <p>Total acceptable quantity: 7</p>	Acceptable quantity		Size		a,b<0.1	Any number	(a+b)/2≤0.1	Any number	0.5<∅<1.0	3	Acceptable		a≥b	a/b≤4/3	a<b	a/b>4/3	Acceptable quantity		Size		∅≤0.4	Any number	0.4<∅≤1.0	5	1.0<∅≤1.5	3	1.5<∅≤2.0	2
Acceptable quantity																														
Size																														
a,b<0.1	Any number																													
(a+b)/2≤0.1	Any number																													
0.5<∅<1.0	3																													
Acceptable																														
a≥b	a/b≤4/3																													
a<b	a/b>4/3																													
Acceptable quantity																														
Size																														
∅≤0.4	Any number																													
0.4<∅≤1.0	5																													
1.0<∅≤1.5	3																													
1.5<∅≤2.0	2																													
Minor	Panel Chipping	<p>$X \leq 1/6$ Panel length $Y \leq 1$ $Z \leq T$</p> 																												
Minor	Panel Cracking	<p>Cracks not allowed</p> 																												
Minor	Copper exposed (pin or film)	Not allowed if visible by eye inspection																												
Minor	Film or Trace Damage	Not allowed if affect electrical function																												

Product No.	DD-160128FC-1A	REV. C

Page	24 / 29
------	---------

Class	Item	Criteria													
Minor	Contact Lead Twist	Not allowed 													
Minor	Contact Lead Broken	Not allowed 													
Minor	Contact Lead Bent	Not allowed if bent lead causes short circuit 													
		Not allowed if bent lead extends horizontally more than 50% of its width 													
Minor	Colour uniformity	Level of sample for approval set as limit sample													
Major		No unmelted solder paste should be present on PCB													
Critical		Cold solder joints, missing solder connections, or oxidation are not allowed													
Minor		No residue or solder balls on PCB are allowed													
Critical		Short circuits on components are not allowed													
Minor	Tray particles	<table border="1"> <thead> <tr> <th></th> <th>Size</th> <th>Quantity</th> </tr> </thead> <tbody> <tr> <td rowspan="2">On tray</td> <td>$\varnothing < 0.2$</td> <td>Any number</td> </tr> <tr> <td>$\varnothing > 0.25$</td> <td>4</td> </tr> <tr> <td rowspan="2">On display</td> <td>$\varnothing \geq 0.25$</td> <td>2</td> </tr> <tr> <td>$L = 3$</td> <td>1</td> </tr> </tbody> </table>		Size	Quantity	On tray	$\varnothing < 0.2$	Any number	$\varnothing > 0.25$	4	On display	$\varnothing \geq 0.25$	2	$L = 3$	1
	Size	Quantity													
On tray	$\varnothing < 0.2$	Any number													
	$\varnothing > 0.25$	4													
On display	$\varnothing \geq 0.25$	2													
	$L = 3$	1													

Product No.	DD-160128FC-1A	REV. C

Page	25 / 29
------	---------

7.3 DEALING WITH CUSTOMER COMPLAINTS

7.3.1 Non-conforming analysis

Purchaser should supply Densitron with detailed data of non-conforming sample.

After accepting it, Densitron should complete the analysis in two weeks from receiving the sample.

If the analysis cannot be completed on time, Densitron must inform the purchaser.

7.3.2 Handling of non-conforming displays

If any non-conforming displays are found during customer acceptance inspection which Densitron is clearly responsible for, return them to Densitron.

Both Densitron and customer should analyse the reason and discuss the handling of non-conforming displays when the reason is not clear.

Equally, both sides should discuss and come to agreement for issues pertaining to modification of Densitron quality assurance standard.

Product No.	DD-160128FC-1A	REV. C

Page	26 / 29
------	---------

8 RELIABILITY SPECIFICATION

8.1 RELIABILITY TESTS

Test Item	Test Condition	Evaluation and assessment
High Temperature Operation	70°C±2, 240 hours	No abnormalities in function and appearance
Low Temperature Operation	-30°C±2, 240 hours	No abnormalities in function and appearance
High Temperature Storage	80°C±2, 240 hours	No abnormalities in function and appearance
Low Temperature Storage	-40°C±2, 240 hours	No abnormalities in function and appearance
High Temperature & High Humidity Storage(Operation)	60°C±2, 90% RH, 120 hours	No abnormalities in function and appearance
Thermal Shock	24 cycle of -40°C 1 Hour, 85°C 1 Hour	No abnormalities in function and appearance

- The brightness should be greater than 50% of the initial brightness.
- The samples used for above tests do not include polarizer.
- No moisture condensation is observed during tests.

8.1.1 FAILURE CHECK STANDARD

After the completion of the described reliability test, the samples were left at room temperature for 2 hrs prior to conducting the failure test at 23±5 °C; 55±15% RH

8.2 LIFE TIME

Item	Description
1	Function, performance, appearance, etc. shall be free from remarkable deterioration more than 10,000 hours under 100 CD/m ² brightness and storage conditions of room temperature (25 °C), normal humidity (50 RH), and in area not exposed to direct sunlight.
2	End of lifetime is specified as 50% of initial brightness.

Product No.	DD-160128FC-1A	REV. C
-------------	----------------	--------

Page	27 / 29
------	---------

9 HANDLING PRECAUTIONS

Safety

If the panel breaks, be careful not to get the organic substance in your mouth or in your eyes.

If the organic substance touches your skin or clothes, wash it off immediately using soap and plenty of water.

Mounting and Design

Place a transparent plate (e.g. acrylic, polycarbonate or glass) on the display surface to protect the display from external pressure. Leave a small gap between the transparent plate and the display surface.

Design the system so that no input signal is given unless the power supply voltage is applied.

Caution during OLED cleaning

Lightly wipe the display surface with a soft cloth soaked with Isopropyl alcohol, Ethyl alcohol or Trichlorotrifluoroethane.

Do not wipe the display surface with dry or hard materials that will damage the polariser surface.

Do not use aromatic solvents (toluene and xylene), or ketonic solvents (ketone and acetone).

Caution against static charge

As the display uses C-MOS LSI drivers, connect any unused input terminal to V_{DD} or V_{SS} . Do not input any signals before power is turned on.

Also, ground your body, work/assembly table and assembly equipment to protect against static electricity.

Packaging

Displays use OLED elements, and must be treated as such. Avoid strong shock and drop from a height.

To prevent displays from degradation, do not operate or store them exposed directly to sunshine or high temperature/humidity.

Caution during operation

It is indispensable to drive the display within the specified voltage limit since excessive voltage shortens its life.

Other Precautions

When a display module is operated for a long of time with fixed pattern may remain as an after image or slight contrast deviation may occur.

Nonetheless, if the operation is interrupted and left unused for a while, normal state can be restored.

Also, there will be no problem in the reliability of the module.

Storage

Store the display in a dark place where the temperature is $25^{\circ}\text{C} \pm 10^{\circ}\text{C}$ and the humidity below 50%RH.

Store the display in a clean environment, free from dust, organic solvents and corrosive gases.

Do not crash, shake or jolt the display (including accessories).

Product No.	DD-160128FC-1A	REV. C

Page	28 / 29
------	---------

10 SUPPORTED ACCESSORIES

10.1 DUO KIT

Densitron has developed an easy to use yet powerful development and demonstration tool for driving its range of Passive Matrix OLED displays from the USB port of a PC.

DUO (Densitron USB OLED) kit is hot pluggable and does not require extra cables or power supply to run, allowing users to be up and running in minutes.

The kit consists of an OLED display with transition Board, USB controller card, mini USB cable and a CD with software application and drivers.



Part number: PDK-N-160128FC-1A

10.2 TRANSITION BOARD CARD

A Transition board card is like a daughterboard which is meant to be a circuit board for connections between the baseboards (DUO).

It has connector pins for interfacing between the display and the baseboards.

It also includes the OLED display.

Part number: PDT-N-160128FC-1A

10.3 CONNECTOR BOARD CARD

A Connector board card is also a daughterboard which is a circuit board for connection between a microprocessor or microcontroller (customer's system).

Part number: EVK-CONNECT-010

10.4 CONNECTOR

Type: ZIF connector

No. of connections	Pitch (mm)	Manufacturer	Manufacturer part no.	Distributor part no.
35	0.50	Omron	XF2M-3515-1A	Farnell/1112561 Digikey/ OR727CT-ND

Product No.	DD-160128FC-1A	REV. C

Page	29 / 29
------	---------