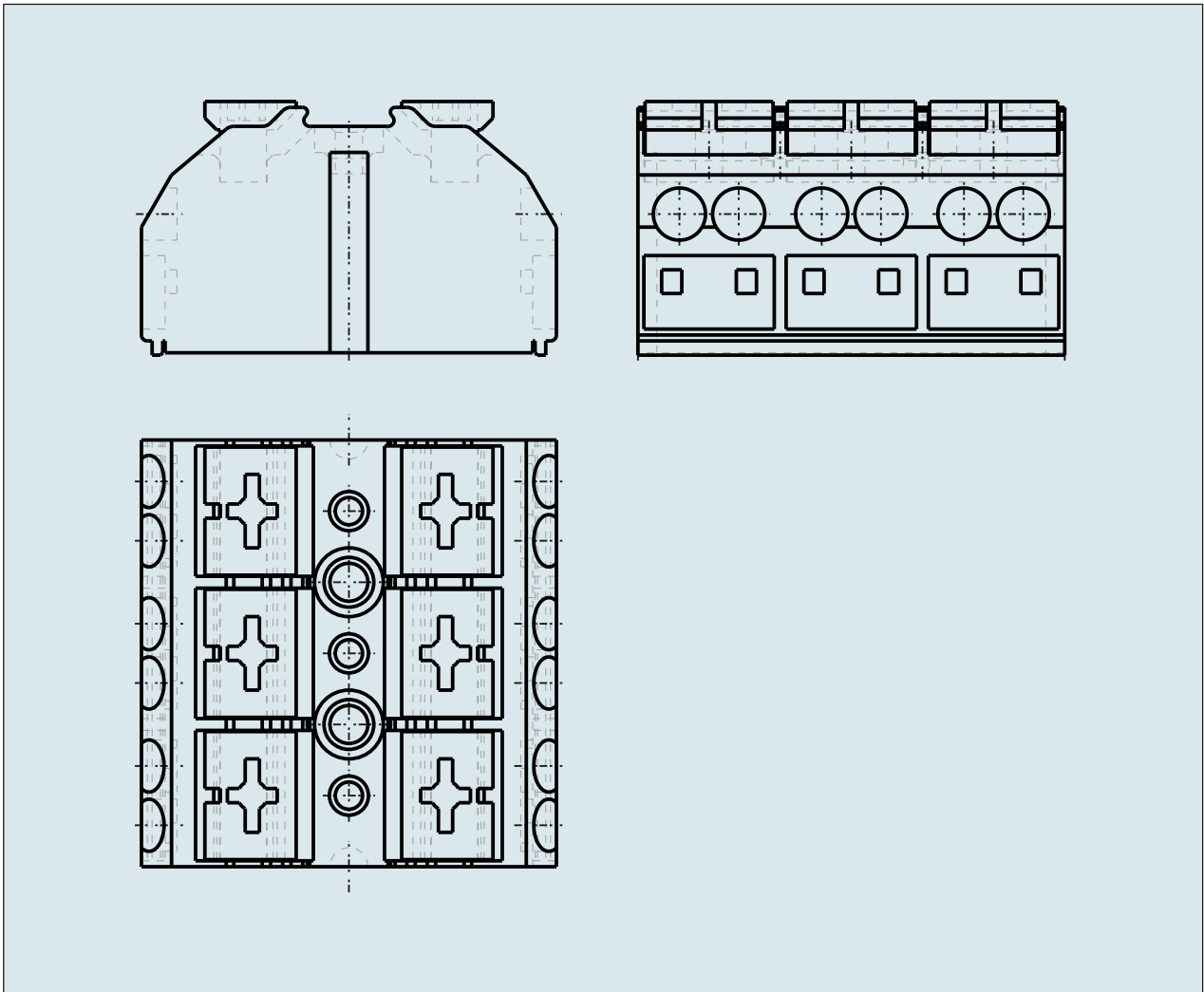
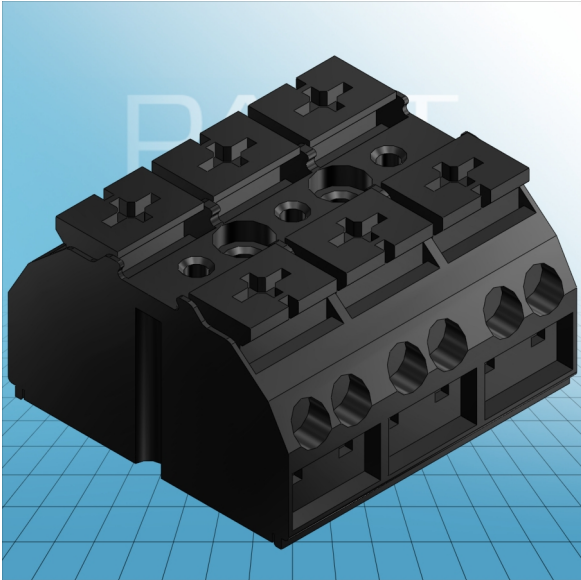


**4-CONDUCTOR DEVICE  
CONNECTORS FOR FIXING SCREW  
AND NUT 3 MM Ø OR FOR SELF  
TAPPING SREW 2.9 MM Ø FROM TOP**



**4-CONDUCTOR DEVICE  
CONNECTORS FOR FIXING SCREW  
AND NUT 3 MM Ø OR FOR SELF  
TAPPING SREW 2.9 MM Ø FROM TOP  
3 POLE  
862-503 TO 862-2603**

<b>ITEM-NO. (ITEM-NO.)</b>	862-2503
<b>Cross section1 (Cross section / mm<sup>2</sup>)</b>	0.5 - 4
<b>Cross section2 (Cross section / AWG)</b>	20 - 12
<b>Strip length (Strip length / mm)</b>	10 - 11
<b>Measured voltage (Measured voltage / V)</b>	500
<b>Measured shock voltage (Measured shock voltage / kV)</b>	6
<b>Pollution degree (Pollution degree)</b>	3
<b>Current intensity (Current intensity / A)</b>	32
<b>P (NO. OF POLES)</b>	3
<b>Height (Height / mm)</b>	21.4
<b>Width (Width / mm)</b>	36
<b>Depth (Depth / mm)</b>	35
<b>No. of connection Points (No. of connection Points)</b>	12
<b>No. of potentials (No. of potentials)</b>	3
<b>COLOR (COLOR)</b>	schwarz
<b>Comment (Comment)</b>	N-ERDE-L1