

# NH DIMENSION Fuse Bases

## 690V Ceramic fuse bases for NH fuses

- Ceramic insulating bases
- Silver plated contacts
- High spring contact pressure
- Screw mounting

## Single-Pole Fuse Bases

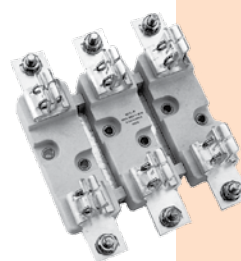
Size	Rated Current (A)	Discontinued Catalog No.	New Ref. No.	New Catalog No.	Std. Pack
00-E	160	40002-G	Z217211	BB001E	12
00-EB	160	40003-G	E217722	EB001	12
0-E	160	40004-G	P218237	BB01E	4
0-P	160	40006-G	C218755	BB01P	4
1-P	250	40008-G	R219274	BB11P	3
2-P	400	40010-G	S219804	BB21P	3
3-P	630	40012-G	D222482	BB31P	3
4-P	1250	40014-G	W223004	BB41P	1



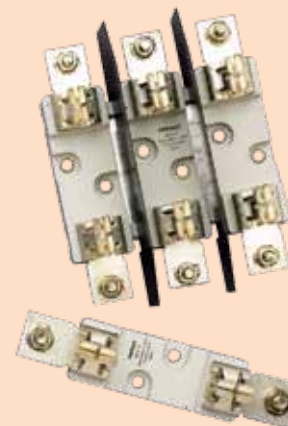
BB001E



BB01P



BB23P



## Ratings:

**Volts** : 690VAC

**Amps** : 160-1250A

## Three-Pole Fuse Bases

Size	Rated Current (A)	Discontinued Catalog No.	New Ref. No.	New Catalog No.	Std. Pack
00-E	160	40502-G	D201851	BB003E	3
00-EB	160	40503-G	A211071	BB003EB	3
0-E	160	40504-G	Q211591	BB03E	1
1-P	250	40508-G	T213641	BB13P	1
2-P	400	40510-G	Y214151	BB23P	1
3-P	630	40512-G	B214660	BB33P	1

Notes: Size 1 fuse base will accept size 0 fuses.  
 Size 2 fuse base will accept size 1 fuses.  
 Size 3 fuse base will accept size 1 & 2 fuses.  
 Size 4 has a special nut to assure contact pressure.  
 Type E has square contacts.  
 Type P has pincer contacts.  
 Type EB has pressure-plate cable connection.

## Insulating Barriers for Ceramic NH Fuse Bases

Size	Rated Current (A)	Discontinued Catalog No.	New Ref. No.	New Catalog No.	Std. Pack
<b>Friction Fit</b>					
00	100	45102-G	A201365	NH00CERAMWALLP	10
0	160	45104-G	M201882	NH0CERAMWALLP	10
1-2	400	45110-G	K211103	NH12CERAMWALLP	4
3	630	45112-G	Z211622	NH3CERAMWALLP	2
<b>Tab Fastened</b>					
00	100	45202-G	G214182	NH00CERAMWALLE	10
0	160	45204-G	L214692	NH0CERAMWALLE	10
1-2	400	45210-G	Q215202	NH12CERAMWALLE	4
3	630	45212-G	S215710	NH3CERAMWALLE	2
4	1250	45214-G	Y216221	NH4CERAMWALLE	2



Friction Fit  
NH12CERAMWALLP



Tab Fastened  
NH3CERAMWALLE

## Approvals:

Designed to meet standards:

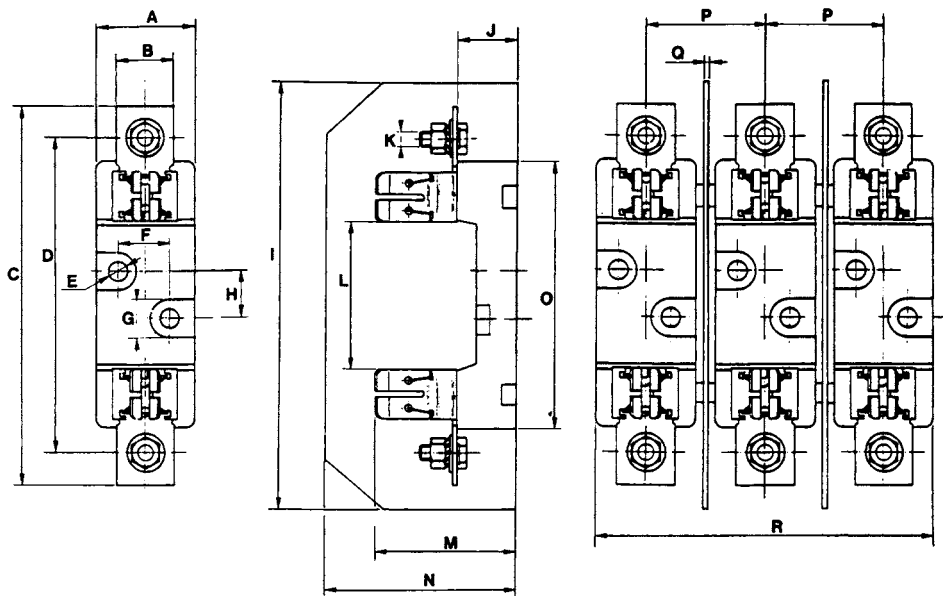
- IEC 60269-2
- DIN, VDE 0636
- DIN 43620
- NFC 63210, 63211, 60200

# NH DIMENSION Fuse Bases

## Dimensions of Ceramic Fuse Bases for NH Fuses

	00-E, EB	0-E	0-P	1-P	2-P	3-P	4-P
A	33	32	32	55	55	55	80
B	20	20	25	32	35	40	45
C	118.5	269	166	210	227	241	312
D	100	151	150	175	200	210	262
E*	8	8.5	8.5	11	11	11	11
F	-	-	-	30	30	30	45
G	14.5	14	14	22	22	22	-
H	25	25	25	25	25	25	30
I	145	185	185	250	250	250	-
J	21.5	29	29	35	35	35	45
K	8	8	8	10	10	12	16
L	55	72	74	84	84	84	111
M	52.5	60	60	71	89	103	145
N	80	85	85	100	100	127	-
O	84	120	120	148	148	148	192
P	34	47	47	62	69	82	-
Q	1	2	2	2	2	2	-
R	101	126	126	177	190	213	-

\* 8mm for all multiple pole bases; dimensions in chart for single pole bases.



# NH DIMENSION Fuse Bases

## 690V plastic fuse bases for NH fuses

- Polyester insulating bases
- Silver plated contacts
- High pressure spring contacts
- Screw or rail mount

## Type 00-EP\* – Fuse Bases for NH-00 Fuses without striker

Poles	Screw Connector							
	Discontinued Catalog No.	Screw Mt.			Rail Mt.			Std. Pack
		New Ref. No.	New Catalog No.	Catalog No.	New Ref. No.	New Catalog No.		
1	41002-G	F215170	BB001EP	42002-G	R216192	BB001EPR	3	
2	41012-G	A217212	BB002EP	42012-G	F218758	BB002EPR	2	
3	41016-G	W229122	BB003EPVBLOC	42016-G	V229121	BB003EPRBLOC	1	
4	41019-G	S219275	BB004EP	42019-G	Z223007	BB004EPR	1	

Poles	Pressure Plate Connector							
	Discontinued Catalog No.	Screw Mt.			Rail Mt.			Std. Pack
		New Ref. No.	New Catalog No.	Catalog No.	New Ref. No.	New Catalog No.		
1	41102-G	T219805	BB00EPBT	42102-G	F200795	BB001EPBR	3	
2	41112-G	D200793	BB002EPB	42112-G	T211594	BB002EPBR	2	
3	41114-G	W201338	BB003EPB	42114-G	C212108	BB003EPBR	1	
4	41119-G	R211592	BB004EPB	42119-G	M215682	BB004EPBR	1	

\* EP bases have square contacts.



BB001EP

### Connection Detail

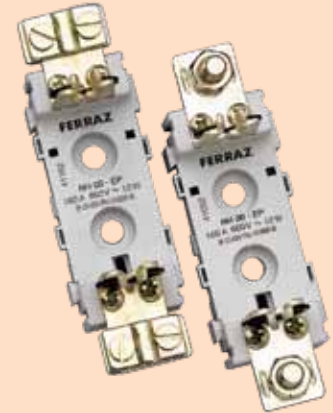
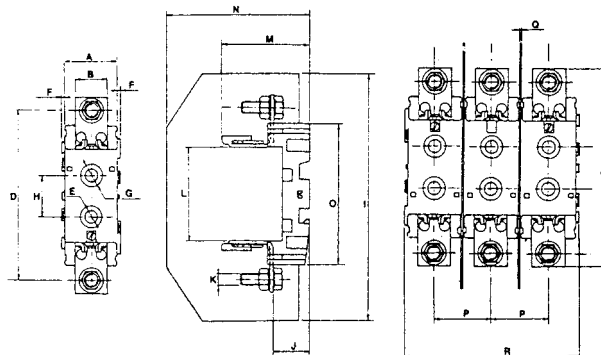


Screw

Clamp

### Dimensions

	00-EP		00-EP
A	32	J	21.5
B	20	K	8
C	117	L	56
D	100	M	52
E	8	N	85
F	2	O	84
G	14	P	34
H	25	Q	1
I	145	R	104



### Ratings:

Volts : 690VAC

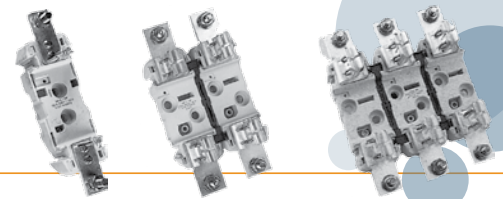
Amps : 160 to 1250A

### Approvals:

Designed to meet standards:

- IEC 60269
- DIN VDE 0636-21 & 201
- DIN 43620

# NH DIMENSION Fuse Bases



## Type 0-EP\* – Fuse Bases for NH-0 Fuses without striker

BB01EPR

BB12PP

BB23PP

Poles	Mounting Style					
	Discontinued Cat. No.	Screw New Reference No.	New Catalog No.	Discontinued Cat. No.	DIN-Rail New Reference No.	New Catalog No.
1	41202-G	B213142	BB01EP	42202-G	S216193	BB01EPR
2	41212-G	C214661	BB02EP	42212-G	P216696	BB02EPR
3	41214-G	G215171	BB03EP	42214-G	C217214	BB03EPR
4	41219-G	Q216191	BB04EP	42219-G	J217726	BB04EPR

\* EP bases have square contacts. PP bases have pincer contacts.

## Type 0-PP – Fuse Bases for NH-0 Fuses w/o striker

Poles	Discontinued Cat. No.	New Reference No.	New Catalog No.	Discontinued Cat. No.	New Reference No.	New Catalog No.
1	41302-G	N216695	BB01PP	42302-G	T218241	BB01PPR
2	41312-G	B217213	BB02PP	42312-G	G218759	BB02PPR
3	41314-G	G217724	BB03PP	42314-G	W219278	BB03PPR
4	41319-G	R218239	BB04PP	42319-G	H222486	BB04PPR

## Type 1-PP – Fuse Bases for NH-1 Fuses w/o striker

Poles	Discontinued Cat. No.	New Reference No.	New Catalog No.	Discontinued Cat. No.	New Reference No.	New Catalog No.
1	41402-G	E218757	BB11PP	42402-G	A223008	BB11PPR
2	41412-G	F222484	BB12PP	42412-G	G200796	BB12PPR
3	41414-G	Y223006	BB13PP	42414-G	Y201340	BB13PPR
4	41419-G	X201339	BB14PP	42419-G	H201855	BB14PPR

## Type 2-PP – Fuse Bases for NH-2 Fuses w/o striker

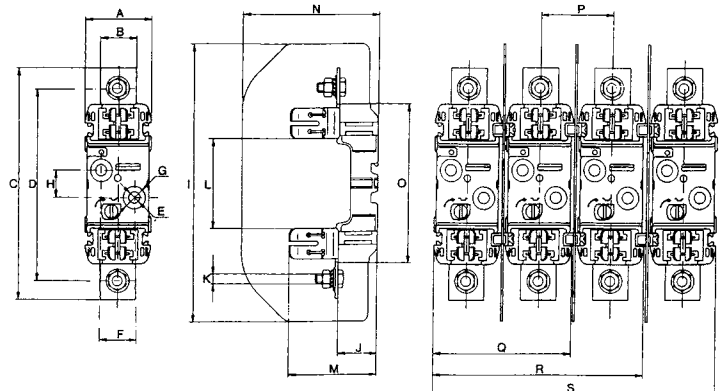
Poles	Discontinued Cat. No.	New Reference No.	New Catalog No.	Discontinued Cat. No.	New Reference No.	New Catalog No.
1	41502-G	F201853	BB21PP	42502-G	E211075	BB21PPR
2	41512-G	S211593	BB22PP	42512-G	V211595	BB22PPR
3	41514-G	B212107	BB23PP	42514-G	D212109	BB23PPR
4	41519-G	C213143	BB24PP	42519-G	R212627	BB24PPR

## Type 3-PP – Fuse Bases for NH-3 Fuses w/o striker

Poles	Discontinued Cat. No.	New Reference No.	New Catalog No.	Discontinued Cat. No.	New Reference No.	New Catalog No.
1	41602-G	W213643	BB31PP	42602-G	X213644	BB31PPR
2	41612-G	D214662	BB32PP	42612-G	B214154	BB32PPR
3	41614-G	H215172	BB33PP	42614-G	F214664	BB33PPR
4	41619-G	L215681	BB34PP	42619-G	K215174	BB34PPR

## Dimensions of Polyester Fuse Bases for NH Fuses

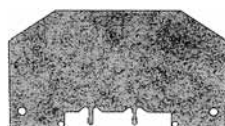
	0-EP	0-PP	1-PP	2-PP	3-PP
A	46	46	60	60	60
B	20	25	32	35	40
C	168	168	209	225	241
D	150.5	150.5	176	201	210
E	7.5	7.5	10.5	10.5	10.5
F	-	-	30	30	30
G	14.5	14.5	20.5	20.5	20.5
H	25	25	25	25	25
I	185	185	250	250	270
J	29	29	35	35	35
K	M8	M8	M10	M10	M12
L	74	75	81	81	81
M	59	61	71	89	103
N	95	95	122.5	122.5	142.5
O	122	122	146	146	146
P	48.5	48.5	65.5	65.5	81.5
Q	94	94	125.5	125.5	141.5
R	142	142	191	191	223
S	190	190	256.5	256.5	304.5



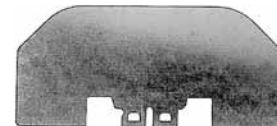
# NH DIMENSION Fuse Bases

## Insulating Barriers for Plastic NH Fuse Bases

Size	Rated Current (A)	Discontinued Catalog No.	New Ref. No.	New Cat. No.	Std. Pack
00	100	44502-G	W212654	BB00CL	2
0	160	44504-G	Z213669	BB0CL	2
1-2	400	44510-G	J214690	BB1-2PPCL	2
3	630	44512-G	Q215708	BB3PPCL	2



BB00CL



BB1-2PPCL

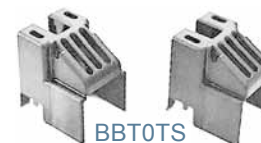
\*Not for use with W229122 and V229121. Use B233865.

## Separators

Size	Rated Current (A)	Discontinued Catalog No.	New Ref. No.	New Cat. No.	Std. Pack
0	160	44604-G	V216724	BBPAK0	2
1-2	400	44610-G	N217753	BBPAK1-2	2



BBPAK1-2



BBT0TS

## Fuse Shields

Size	Rated Current (A)	Discontinued Catalog No.	New Ref. No.	New Cat. No.	Std. Pack
00	100	44802-G	G213170	BB00COV	3
0	160	44804-G	F214181	BB0COV	3
1-2	400	44810-G	K214691	BB1-2COV	3
3	630	44812-G	R215709	BB3COV	2



BB00COV

## Terminal Shields

Size	Rated Current (A)	Discontinued Catalog No.	New Ref. No.	New Cat. No.	Std. Pack
00	100	44702-G	M222513	BB00TS	6
0	160	44704-G	K200822	BB0TS	6
1-2	400	44710-G	Y211621	BB2TS	6

## One Cable – Terminal for NH Bases

Base Size	Cable Size (mm)		Discontinued Catalog No.	New Ref. No.	New Cat. No.	Std. Pack
	Max.	Min.				
00	50	6	45421-G	Q217755	BORNEABF50	60
00-0	95	10	45423-G	A218270	BORNEABF95	50
1	150	16	45425-G	N218788	BORNEABF150	30
2-3	240	50	45427-G	A219305	BORNEABF240	15



BORNEABF150

## Two Cable – Terminal for NH Bases

Base Size	Cable 1 (Size mm)		Cable 2 (Size mm)		Discontinued Catalog No.	New Ref. No.	New Cat. No.	Std. Pack
	Max.	Min.	Max.	Min.				
00	50	6	50	6	45431-G	B219835	BORNEABF50D	60
00-0	95	10	95	10	45433-G	P222515	BORNEABF95D	30
1	150	25	150	16	45435-G	F223036	BORNEABF150D	20
2-3	240	95	240	50	45437-G	B201366	BORNEABF240D	5



BORNEABF150D

## Dimensions of Terminals

Discontinued Catalog No.	New Cat. No.	A	B	C	M
45421-G	BORNEABF50	18	26	34	6
45423-G	BORNEABF95	24	35	52	8
45425-G	BORNEABF150	26	41	58	10
45427-G	BORNEABF240	36	53	68	12
45431-G	BORNEABF50D	18	26	39	6
45433-G	BORNEABF95D	24	35	82	8
45435-G	BORNEABF150D	26	41	84	10
45437-G	BORNEABF240D	36	53	98	12

