



fitted with

- work equipment**
- connected load**
- power consumption**
- luminous flux**
- luminous efficacy**
- light distribution**
- light colour**
- color rendering index (CRI)**
- system of protection**
- class of protection**
- technology**
- usage**
- luminaire body**
- lamp cover**
- weight (net)**
- mains supply**

- design**
- fastening**
- dimension**
- special features**

LED

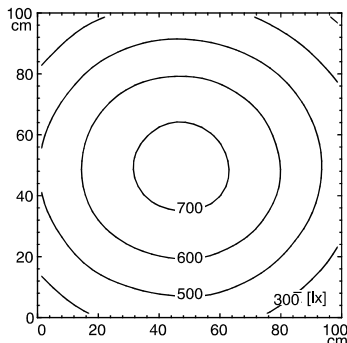
- Energy efficiency category A+
- without
- 20-28V; DC
- approx. 16 W
- approx. 1680 lm
- approx. 105 lm/W
- direct, wide-angled beam
- neutral white, approx. 5000 K
- > 80
- IP 67
- III
- switchable
- external
- aluminium, anodised, aluminium coloured anodised
- screen, clear
- approx. 0.8 kg
- built-in plug
- RSFM 4/0,05 P25-1
- mounted version
- L-angle, clamp
- A=540 mm
- angle of illumination 90°



RSFM 4/0,05 P25-1

illuminance

distance: 100 cm
Em: 541 lx
Emax: 732 lx
Emin: 326 lx



luminous intensity

