

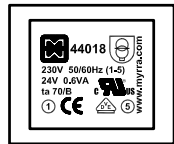
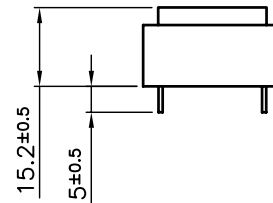
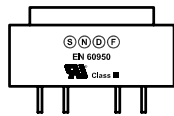
**SAFETY ISOLATING TRANSFORMER**

POWER : 0.6VA  
 INPUT VOLTAGE : 230V  
 FREQUENCY : 50/60Hz  
 NOMINAL OUTPUT VOLTAGE : 24V

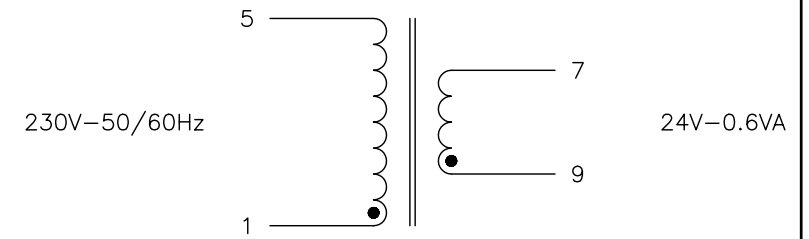
INHERENTLY SHORT CIRCUIT PROOF TRANSFORMER  
 IPOO  
 UL94V0  
 OPERATING TEMPERATURE : -25°C to 70°C  
 STORAGE TEMPERATURE : -25°C to 85°C  
 INSULATION CLASS (IEC85) : B  
 INHERENT PROTECTION

**STANDARDS :**

- UL506 (File E111078)
- CSA 22-2 (File E111078)
- UL1585 (File E240724)
- VDE (File Ref:1398300)
- EN60950 (File Ref:1398300)
- EN61558-1 (File Ref:1398300)
- EN61558-2-6 (File Ref:1398300)
- CE



 230V 50/60Hz (1-5) 24V 0.6VA ta 70/B CE, UL, VDE, EN, etc.	S N D F EN 60950 Class III	N°07
---	----------------------------------	------



Finition:		Tolérance générale:	
Finition:		General tolerance:	
Ech: 1:1	Matière:		
	Material:		
Dessiné par: ROUSSEL.Ch	Date: 10/05/2004	Visa:	J.P.M.

D					
C					
B					
A					
Rev	Date	Modification	Dessiné	Visa	

**DATA SHEET 44018**  
**EI 30x5**

	22 Allée du Clos des Charmes Z.A. Les Portes de la Forêt 77090 COLLEGIEN Tel : 01-60-37-55-55 Fax : 01-60-17-12-00	<b>DS44018</b>
--	--	----------------