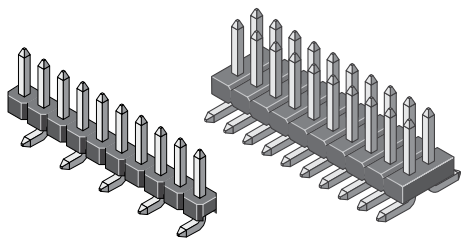


Pin Header SMD 1,27 mm

Series

178



Rated current	1,0 A
Rated voltage	100 V _{RMS} / V _{DC}
Withstand voltage	300 V _{RMS} for one minute
Material contact	Copper alloy
Material insulator	High temp. thermoplast UL94V-0
Operating temperature	-40°C to +105°C
Max. processing temper.	260°C for 10 seconds

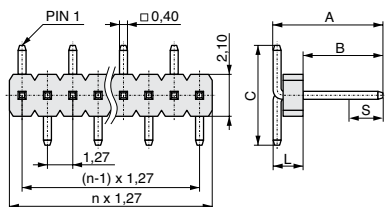
pitch	1,27
termination	
contact size	
max. pincount	050 / 100

All dimensions in mm.

Product group
3

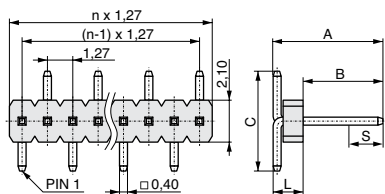
Variation

Layout A

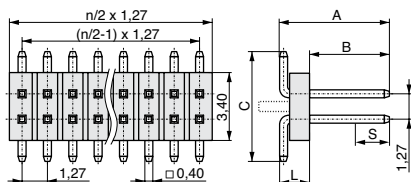


1

Layout B

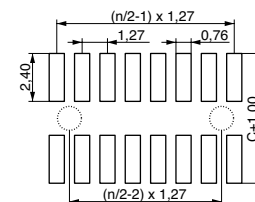
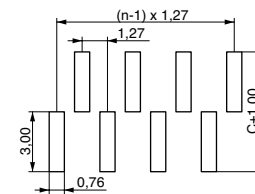
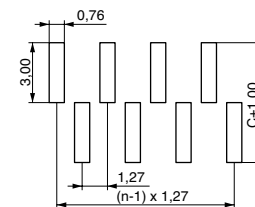


2



3

PCB Layout



see figure left	see figure left	see figure left	see figure left	available in variation	
A	B	C	L	1	2
4,70	3,00	5,50	1,70	1	2
8,70	6,00	6,00	2,70	1	2
4,50	3,00	5,50	1,50		3
4,68	3,00	5,50	1,68		3
5,20	3,20	5,50	2,00		3
5,68	3,00	5,50	2,68		3
6,58	3,00	5,50	3,58		3

**** Positioning peg**
 0 = Without peg
 1 = With peg
 (optional only for variation 3, for A=5,68 and 6,58 peg not possible)
*** No. of contacts:**
 Variation 1 = 003 - 050
 Variation 2 = 003 - 050
 Variation 3 = 006 - 100

Packaging:
 R = Reel
 T = Tube

Cap:
 0 = Without
 1 = With

Plating:
 T = Sn
 F = Au
 S = Selective Au (min 5 mm on mating side)

Variation (1,2,3)

No. of contacts * (003... - 100)

Positioning peg** (0,1)

Plating contact (T,F,S)

Packaging (R,T)

Cap (0,1)

A (1/100 mm)
 e.g. 1000 = 10,00 mm



www.mpe-connector.de

Order code:

178 - - - - - - - - - - X - - - - -

Mating series	187	185	349
see page	4-5	4-7	4-8