

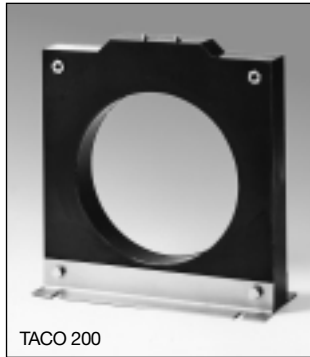
Accessories

Current Transformer, 1-Phase AC

Types TACO 110, TACO 200



TACO 110



TACO 200

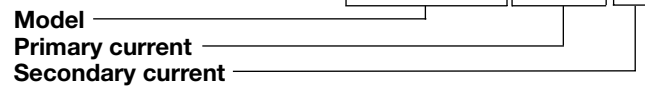
- Cable/bus-bar type current transformer
- Panel mounting facility
- TACO 110: class 0.5, currents from 800 to 4000 A
- TACO 200: class 0.5, currents from 1000 to 6000 A

Product Description

Cable/bus-bar type current transformer with panel mounting facility. Rated primary currents from 800 A to 6000 A.

Ordering Key

TACO110800A 1A



Type Selection

Model

TACO110:
 Cable diameter:
 Max. 110 mm

TACO200:
 Cable diameter:
 Max. 200 mm

Primary current

See Range Table

Input Specifications

Operating frequency	40 to 60 Hz
Max. system voltage	0.72 kV
Rated insulation level	3 kV / 1 min. @ 50 Hz
Short-time current rating I_{th} I_{dyn}	Typical $100 I_n / 1 s$ $2.5 I_{th}$ The short-time thermal current I_{th} is anyway limited by the cable/bus-bar size
Security factor	≤ 5

General Specifications

Standards	According to IEC 60185
Housing TACO 100 TACO 200	Self-extinguishing thermoplastic insulated housing Fully embodied in resin insulated housing
Mounting	Panel mounting by means of angle steel supplied with the CT
Standard accessories	FAST-ON for secondary terminals Angle steels for panel mounting 1 A secondary current
Special features	Sealable terminal cover Tropicalization
Cable diameter TACO 110 TACO 200	Max. 110 mm Max. 200 mm

Output Specifications

Rated secondary current	5 A standard 1 A on request
-------------------------	--------------------------------



Range Table

TACO 110:

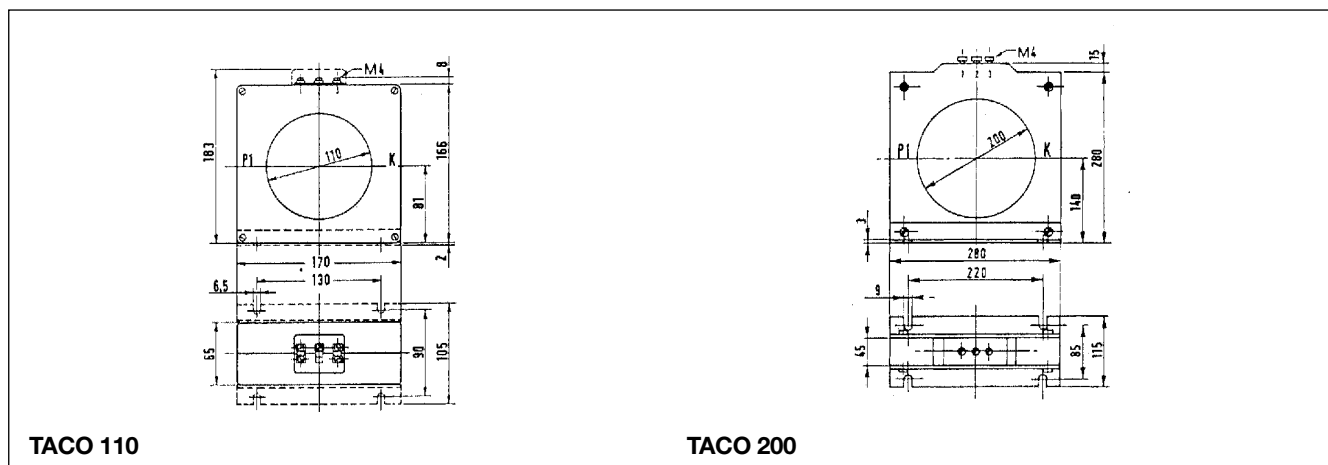
Rated primary current	Rated secondary current 1 A/5 A		
	Class 0.5 ¹⁾ Burden	Class 1 ¹⁾ Burden	Class 5P10 Burden
800 A	15 VA	30 VA	10 VA
1000 A	20 VA	40 VA	10 VA
1500 A	40 VA	80 VA	10 VA
2000 A	50 VA	100 VA	10 VA
2500 A	60 VA	120 VA	10 VA
3000 A	80 VA	160 VA	10 VA
4000 A	100 VA	200 VA	10 VA

TACO 200:

Rated primary current	Rated secondary current 1 A/5 A		
	Class 0.5 ¹⁾ Burden	Class 1 ¹⁾ Burden	Class 5P10 Burden
1000 A	15 VA	30 VA	10 VA
1500 A	15 VA	30 VA	10 VA
2000 A	15 VA	30 VA	10 VA
2500 A	40 VA	80 VA	10 VA
3000 A	40 VA	80 VA	10 VA
4000 A	50 VA	100 VA	10 VA
5000 A	50 VA	100 VA	10 VA
6000 A	50 VA	100 VA	10 VA

¹⁾ The accuracy class is depending on the burden output. For the same rated primary current, the higher the burden the lower the class (class down-grade).

Dimensions (mm)



Wiring Diagram

