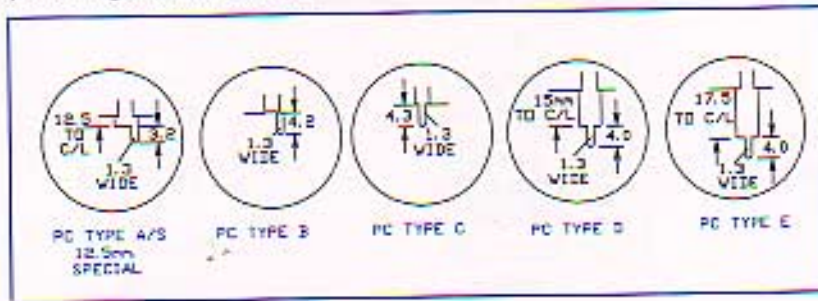






## S2 / S4 PRINTED CIRCUIT MOUNTING STYLES

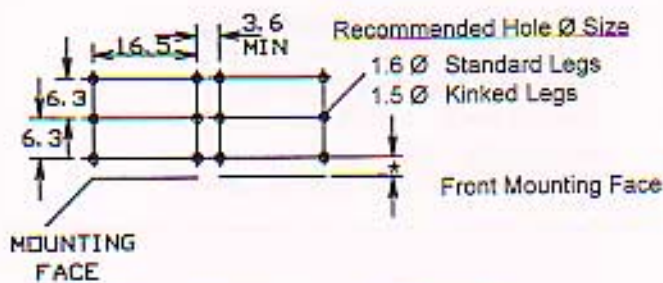
Both S2 and S4 jack sockets can be supplied with terminals designed for direct board mounting. Six PC styles are detailed below. (Type A is shown in the S2 / S4 drawings.) Specify using the suffix PC- and the type letter for the pin configuration required.



### S2



### S2/S4 PC GRID



★	Types A, A/S, & B	Types C, D, & E
S2	3.0	4.8
S4	7.8	9.8

NOTE: For Front Mounting Face reference, see S2 & S4 drawings at right

### S4



### KINKED LEGS

- Snaps in to PCB for retention.
- For S2/S4 jacks on PC-A & C types.
- Prevents flux migration into contacts.
- Provided at no extra charge.



### S2/S4 EARTHING WASHER

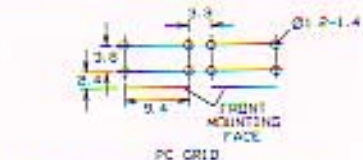
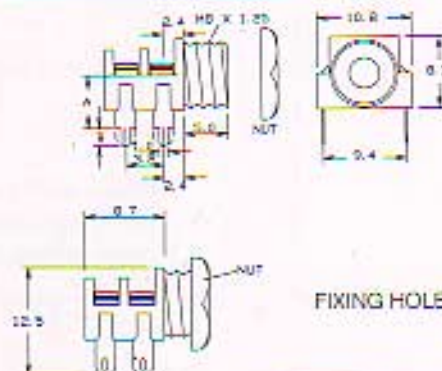


- Designed for wave soldering.
- Incorporates toothed washer.
- Separate pins for PC mounting.
- Snaps onto jack socket.

## MINIATURE 3.5mm JACK SOCKETS

S6 sockets are produced in accordance with DIN dimensions and mate with our P5/P6 plugs. Many products of Far East origin have plugs that vary in tip size. We suggest our JY series for these applications. Soldering must be done quickly with low power irons due to the small contact size. Available in switched, unswitched, making, solder tag and PC contacts.

### S6 / S6-PC



GENERAL TOLERANCE  $\pm 0.15$ mm.  
Dimensions in mm.

OPTION	STD.	SPECIAL
Dim. A	6.2	5.5
Dim. B	2.1	2.7