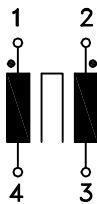
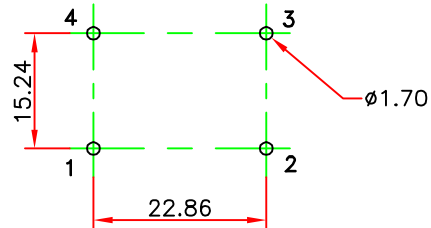


Schematic



Viewed on component side



## TECHNICAL DATA :

Core : toroid Ø31 / Ø19 / H12  $\mu$ i 6000 ferrite material or equivalent

Wire : Ø1.18 grade 1 class F or equivalent

Rated current per winding : 16A referred to 250V – 50Hz and +60°C ambient temperature

Inductance value per winding : 2.7mH –30% + 50% at 10KHz , 0.1mA

Test voltage between winding : 1500VAC – 50Hz , 2 sec.

Climatic category : DIN GKS (–40° to +125°C; humidity cat.C)

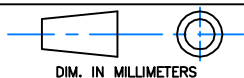
Socket material : PBT at 30% fibreglass UL94–V0 or equivalent

RoHS compliance

Please, refer to general catalog for unspecified parameters

a	
IND	DATE

## Radiohm Specification



Designation : 32V31 A600 SV3

Part number : \_\_\_\_\_ Date : 24/11/2011

Preliminary :  Final :

## Customer Specification Approval

Part number : \_\_\_\_\_

Signature : \_\_\_\_\_ Name : \_\_\_\_\_ Title : \_\_\_\_\_ Date : \_\_\_\_\_