



# General Purpose Fuses



DIN Fuse Accessories

## D-type (DIAZED)

# D Fuse System

2 – 200 A, 500 V, 690 V  
Line protection fuses gL-gG

IEC 269-3-1  
DIN VDE 0636 Part 31  
DIN VDE 0636 Part 301

Dimensions are stipulated in the following regulations:

- DIN 49360 D Fuse-links
- DIN 49515 D Fuse-links
- DIN 49367 D Fuse-links, long design
- DIN 49514 D Screw caps
- DIN 49510 D Fuse bases
- DIN 49362 D Gauge rings
- DIN 49516 D Screw gauge pieces

### Structure of the D fuse system

Like the modern NEOZED system, the D-Fuse system consists of fuse base, gauge piece, fuse link and screw cap. It is designed for a rated voltage of 500V. Non-interchangeability of rated current is guaranteed from one current level to the other above 6 Amps. This is ensured by graduating the diameter of the bottom contact of the fuse-link along with corresponding fixed diameters for the gauge piece.

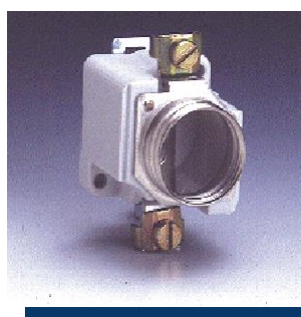




# General Purpose Fuses

DIN Fuse Accessories

## D-type (DIAZED)



**D Fuse bases**  
for snap-on fastening

500 V

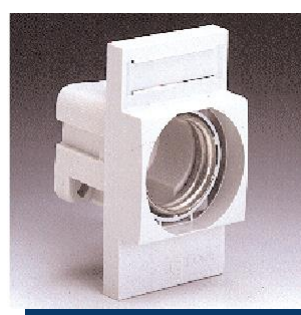
SIZE	RATED In CURRENT (A)	Pole	Max cross sect. mm <sup>2</sup>	CATALOG NUMBER	REFERENCE NUMBER	PACK.
------	----------------------	------	---------------------------------	----------------	------------------	-------

without shock-proof protection cover

DII	25	1*	6	00685.100000	K207055	15
DIII	63	4*	16	00686.400000	V215597	15

with shock-proof protection cover

DII	25	1	6	00685.110000	D211511	10
DIII	63	4	16	00686.410000	C216110	10



**D Fuse bases**  
for screw fixing

500 V

SIZE	RATED In CURRENT (A)	Pole	Max cross sect. mm <sup>2</sup>	CATALOG NUMBER	REFERENCE NUMBER	PACK.
------	----------------------	------	---------------------------------	----------------	------------------	-------

without shock-proof protection cover

DII	25	1*	6	00081.100000	K218670	15
DIII	63	4*	16	00072.400000	H212021	15

with shock-proof protection cover

DII	25	1*	6	00081.110000	Z219189	10
DIII	63	4*	16	00072.410000	A212543	10

\* Terminal types see page 143



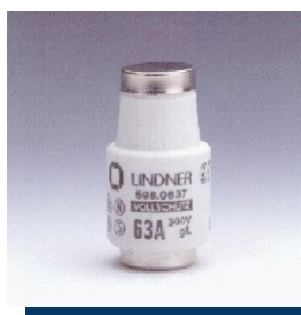
**D Fuse-links**  
2 - 200A gL-gG

500 V

Characteristics page 143

SIZE	RATED In CURRENT (A)	GAUGE COLOR	CATALOG NUMBER	REFERENCE NUMBER	PACK.
NDZ	2	pink	00594.002000	C222918	25
NDZ	4	brown	00594.004000	L200708	25
NDZ	6	green	00594.006000	A201250	25
NDZ	10	red	00594.010000	L201766	25
NDZ	16	gray	00594.016000	D207049	25
NDZ	20	blue	00594.020000	B211509	25
NDZ	25	yellow	00594.025000	Y212541	25
DII	2	pink	00597.002000	E213559	25
DII	4	brown	00597.004000	D214064	25
DII	6	green	00597.006000	L214577	25
DII	10/6 <sup>1</sup>	red	00597.610000	X218152	25
DII	10	red	00597.010000	S215089	25
DII	16	gray	00597.016000	A216108	25
DII	20	blue	00597.020000	J217128	25
DII	25	yellow	00597.025000	P217639	25
DIII	35	Black	00598.035000	J218669	25
DIII	50	white	00598.050000	J222165	25
DIII	63	copper	00598.063000	M200709	25

<sup>1</sup> with base contact stud for 6 A





# General Purpose Fuses

DIN Fuse Accessories

## D-type (DIAZED)



**D Fuse-links**  
2 - 200 A gL-gG  
500 V  
Characteristics page 143



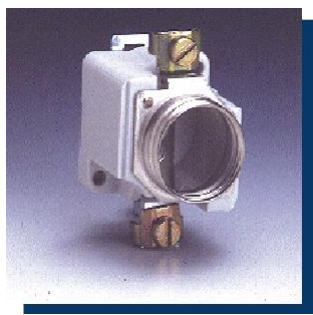
SIZE	RATED In CURRENT (A)	GAUGE COLOR	CATALOG NUMBER	REFERENCE NUMBER	PACK.
NDZ	2	pink	00594.002700	W212539	25
NDZ	4	brown	00594.004700	G213055	25
NDZ	6	green	00594.006700	C213557	25
NDZ	10	red	00594.010700	B214062	25
NDZ	16	grey	00594.016700	J214575	25
NDZ	20	blue	00594.020700	Q215087	25
NDZ	25	yellow	00594.025700	Q215593	25
D II	2	pink	00597.002700	Z219718	25
D II	4	brown	00597.004700	G222163	25
D II	6	green	00597.006700	B222917	25
D II	10/6 f <sup>1</sup>	red	00597.610700	D213558	25
D II	10	red	00597.010700	K200707	25
D II	16	grey	00597.016700	K201765	25
D II	20	blue	00597.020700	A211508	25
D II	25	yellow	00597.025700	X212540	25

<sup>1</sup> with base contact stud for 6 A (without VDE test mark)

D III	35	black	00598.035700	C214063	25
D III	50	white	00598.050700	K214576	25
D III	63	copper	00598.063700	R215088	25
D IV	80	silver	00595.080700	V216609	10
D IV	100	red	00595.100700	M217637	10
D V	125	yellow	00596.125700	V218150	10
D V	160	copper	00596.160700	G218667	10
D V	200	blue	00596.200700	W219186	10

### D Fuse system ~ 690 V

In this design, the fuse base and gauge piece correspond to the 500 V standard for D III (E33). The extended fuse links D III and a special extended screw cap serve to complement the present system. D-type 690 V fuses are only available in size III.



**D Fuse-links**  
2 - 63 A gL - gG  
~ 690 V



**D Screw-cap long design**  
~ 690 V

SIZE	RATED In CURRENT (A)	GAUGE COLOR	CATALOG NUMBER	REFERENCE NUMBER	PACK.
D III	2	pink	00603.002700	R215594	25
D III	4	brown	00603.004700	Z216107	25
D III	6	green	00603.006700	W216610	25
D III	10	red	00603.010700	H217127	25
D III	16	grey	00603.016700	N217638	25
D III	20	blue	00603.020700	W218151	25
D III	25	yellow	00603.025700	H218668	25
D III	35	black	00603.035700	X219187	25
D III	50	white	00603.050700	A219719	25
D III	63	copper	00603.063700	H222164	25

D III	63		00605.000000	L218671	25
-------	----	--	--------------	---------	----

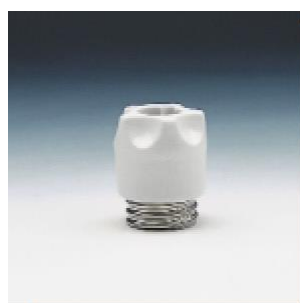
Dimensions page 143



# General Purpose Fuses

 DIN Fuse Accessories

## D-type (DIAZED)



### D Screw caps

Porcelain

500 V



### Plastic

500 V



### D Gauge piece



### D Screw gauge pieces



### D Gauge rings

SIZE	RATED In CURRENT (A)		CATALOG NUMBER	REFERENCE NUMBER	PACK.
------	----------------------	--	----------------	------------------	-------

with testing hole

DII	25	E 27	00690.000200	E218619	20
DIII	63	E 33	00691.000200	B213004	20

without testing hole

NDZ	25	E 16	00589.000000	Z216613	50
DII	25	E 27	00690.000000	Z218108	20
DIII	63	E 33	00691.000000	F211973	20
DIV	100	R1¼	00592.000000	Y216060	10

with testing hole

DII	25	E 27	02071.000000	L201720	20
DII	63	E 33	02072.000000	E214019	20

SIZE	RATED In CURRENT (A)	GAUGE COLOR	CATALOG NUMBER	REFERENCE NUMBER	PACK.
NDZ	2	pink	01655.002000	B212544	50
NDZ	4	brown	01655.004000	M213060	50
NDZ	6	green	01655.006000	H213562	50
NDZ	10	red	01655.010000	G214067	50
NDZ	16	grey	01655.016000	P214580	50
D II	2	pink	01657.002000	A219190	25
D II	4	brown	01657.004000	D219722	25
D II	6	green	01657.006000	L222167	25
D II	10	red	01657.010000	F222921	25
D II	16	grey	01657.016000	P200711	25
D II	20	blue	01657.020000	D201253	25
D II	25	yellow	01657.025000	P201769	25
D III	35	black	01658.035000	C207071	25
D III	50	white	01658.050000	E211512	25
D III	63	copper	01658.063000	J212022	25
D II	2	pink	01652.002000	W215092	50
D II	4	brown	01652.004000	W215598	50
D II	6	green	01652.006000	D216111	50
D II	10	red	01652.010000	A216614	50
D II	16	grey	01652.016000	M217131	50
D II	20	blue	01652.020000	S217642	50
D II	25	yellow	01652.025000	A218155	50
D III	2	pink	01653.002000	M218672	50
D III	4	brown	01653.004000	E219723	50
D III	6	green	01653.006000	M222168	50
D III	10	red	01653.010000	G222922	50
D III	16	grey	01653.016000	Q200712	50
D III	20	blue	01653.020000	E201254	50
D III	25	yellow	01653.025000	Q201770	50
D III	35	black	01653.035000	L207079	50
D III	50	white	01653.050000	F211513	50

Dimensions page 143



# General Purpose Fuses

 DIN Fuse Accessories

## D-type (DIAZED)



Key for D gauge pieces

SIZE	CATALOG NUMBER	REFERENCE NUMBER	PACK.
DII, DIII	01657.993000	E216112	10



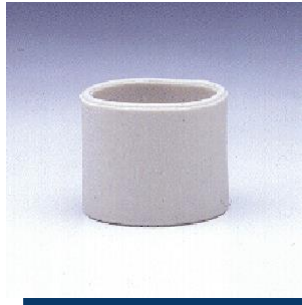
**D Covers**  
insulating material

single pole			
D II	00685.700000	H214068	30
D III	00686.700000	X215093	30
D II	00685.709000	Q214581	30
D III	00686.709000	X215599	30



**D Contact protection rings**

triple pole			
D II	00625.700000	N213061	8
D II	00626.700000	J213563	8



**D Adapter fittings**

Plastic			
D II	00181.900000	K222120	50
D III	00182.900000	A222870	50

Porcelain			
D II	00081.900000	C219675	30
D III	00072.900000	K212023	20



**D Locking caps**

for DII-fuses links in D III-bases			
D II/ D III	00581.000000	C212545	50

DII	Supply boards <sup>1)</sup>	02071.800000*	B216615*	10
DII	Industry <sup>2)</sup>	02071.810000	N217132	10
DIII	Supply boards <sup>1)</sup>	02072.800000*	T217643*	10
DIII	Industry <sup>2)</sup>	02072.810000	B218156	10

\* For authorized energy supplier personnel only

<sup>1)</sup> black top, red screw pitch

<sup>2)</sup> red top, black screw pitch

**Locking keys**

Supply boards	01714.820000*	K213564*	10
Industry	01714.830000	J214069	10

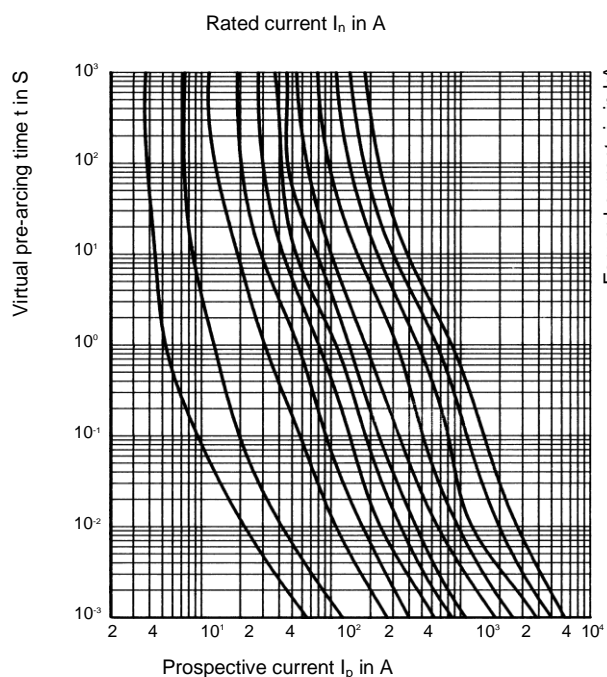
\*For authorized energy supplier personnel only



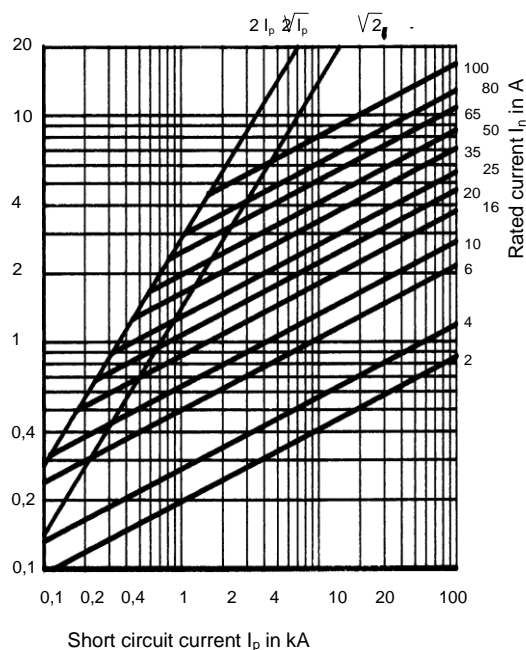
# General Purpose Fuses

 DIN Fuse Accessories

## D-type (DIAZED)

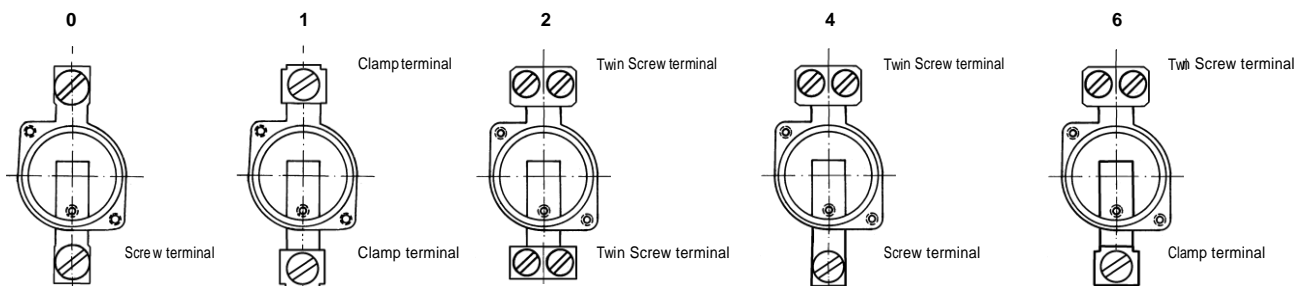


Time-current characteristics of D Fuses 2...100 A gL-gG

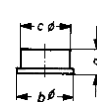
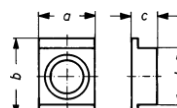
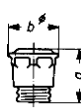
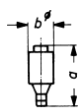


Forward current characteristics of NEOZED fuses 2...100 A gL-gG

### Terminal types



### Dimensions



#### D Fuse-links

Cat.#	b <sub>1</sub>	φO
NDZ	50	12
DII	50	22
DIII	50	27
DIV	63	37
DV	65	45

#### D Screw caps

Cat. #	a	b
690.0002	42	34
691.0002	43	42
589.0002	34	27
690	42	34
691	43	42
592	52	60
2071	42	33
2072	43	40

#### D Covers

Cat. #	a	b	c
685.7	40	90	22
686.7	50	90	22
685.709	45	90	22
686.709	54	90	22
625.7	107	107	51
626.7	127	130	51

#### D Contact protection rings

Cat. #	a	b	c
181.9	17,5	44,5	40,5
182.9	19	54	50,5
81.9	18,5	43,5	39,8
72.9	18	53,5	50,5



# General Purpose Fuses

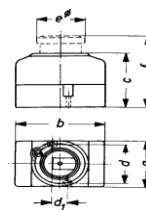


DIN Fuse Accessories

## D-type (DIAZED)

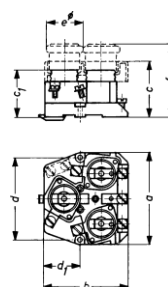
### Dimensions

Catalog number	Sizes in mm		c	d	d <sub>1</sub>	e0	f
	a	b					
99	40	70	53	32	–	38	82
199	40	70	54	20	–	38	83
200	50	90	54	20	–	48	83

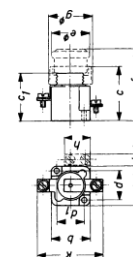


Catalog number	Sizes in mm		c	c <sub>1</sub>	d	d <sub>1</sub>	e0	f
	a	b						
625	90	81	54.5	46	80	35	37	81
626	109	100	54.5	46	95	49.5	46.5	81
625*	107	107	51	–	–	–	–	–
626*	127	130	51	–	–	–	–	–

\* with cover cap



Catalog number	Sizes in mm			c <sub>1</sub>	d	d <sub>1</sub>	e0	f	O	h	i	k
	a	b	c									
685/81	38	40	60	46	29	27	38	82	43	–	–	60
686/72	46	44	57	48	35	33,5	48	84	52	–	–	73



Catalog number	Sizes in mm			d	e	f	g	g <sub>1</sub>
	a	b	c					
120	42	52	60	44	38	85	12	37
121	52	62	63	54	48	88	13	38

