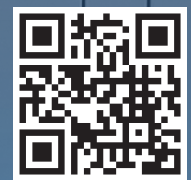




Plastic and Rubber Industry Sensors Temperature Control Modules



RTL / SLPT

- Measuring range 10 - 1000 mm
- Long mechanical life 100 million movements
- Excellent repeatability <0.01 mm
- Linearity $\pm 0,05$

**RESISTIVE
POTENTIOMETRIC**

LINEAR POTENTIOMETERS



RPH

- Measuring range 100 - 1950 mm
- Long mechanical life 100 million movements
- Excellent repeatability <0.01 mm
- Linearity $\pm 0,05$

**RESISTIVE
POTENTIOMETRIC**



**PLASTIC AND RUBBER
INDUSTRY SENSORS**

RTL

**PLASTIC INJECTION
MACHINES**

RPH

**VERTICAL PLASTIC AND RUBBER
INJECTION MACHINES**

MST / MSS / MSW

- Measuring range 100 - 3000 mm
- 16 bit resolution analogue output
- Output 0-10V, 0-20mA
- 24 VDC power supply

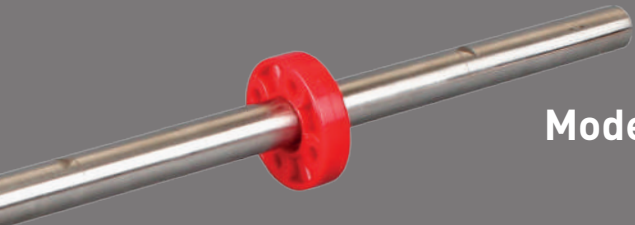
Sensopulse®
MAGNETOSTRICTIVE

ANALOG 0-10 V
4-20 mA

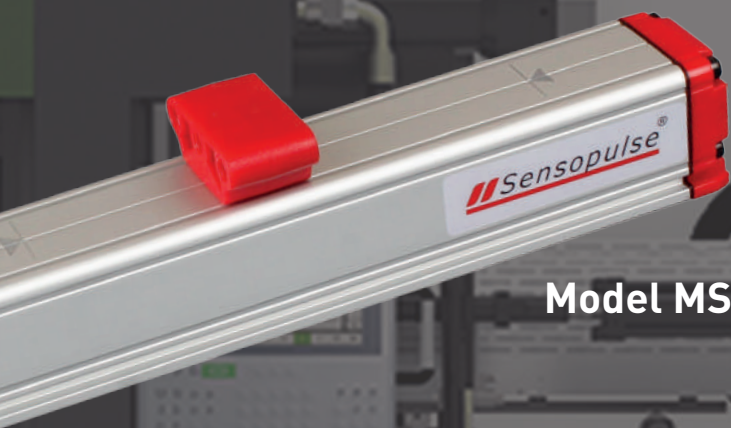
NON-CONTACT MAGNETOSTRICTIVE POSITION SENSORS



PLASTIC AND RUBBER
INDUSTRY SENSORS



Model MST



Model MSS



Model MSW

**Sensopulse**[®]

TWO PLATEN
INJECTION MACHINES

DMST / DMSS / DMSW

- Measuring range 100 - 5000 mm
- 15 bit resolution
- CANopen, ProfiBUS
EtherCAT and Modbus RTU output protokol
- 24 VDC power supply

CANopen®

CANbus

SSI
SYNCHRON SERIELLES INTERFACE

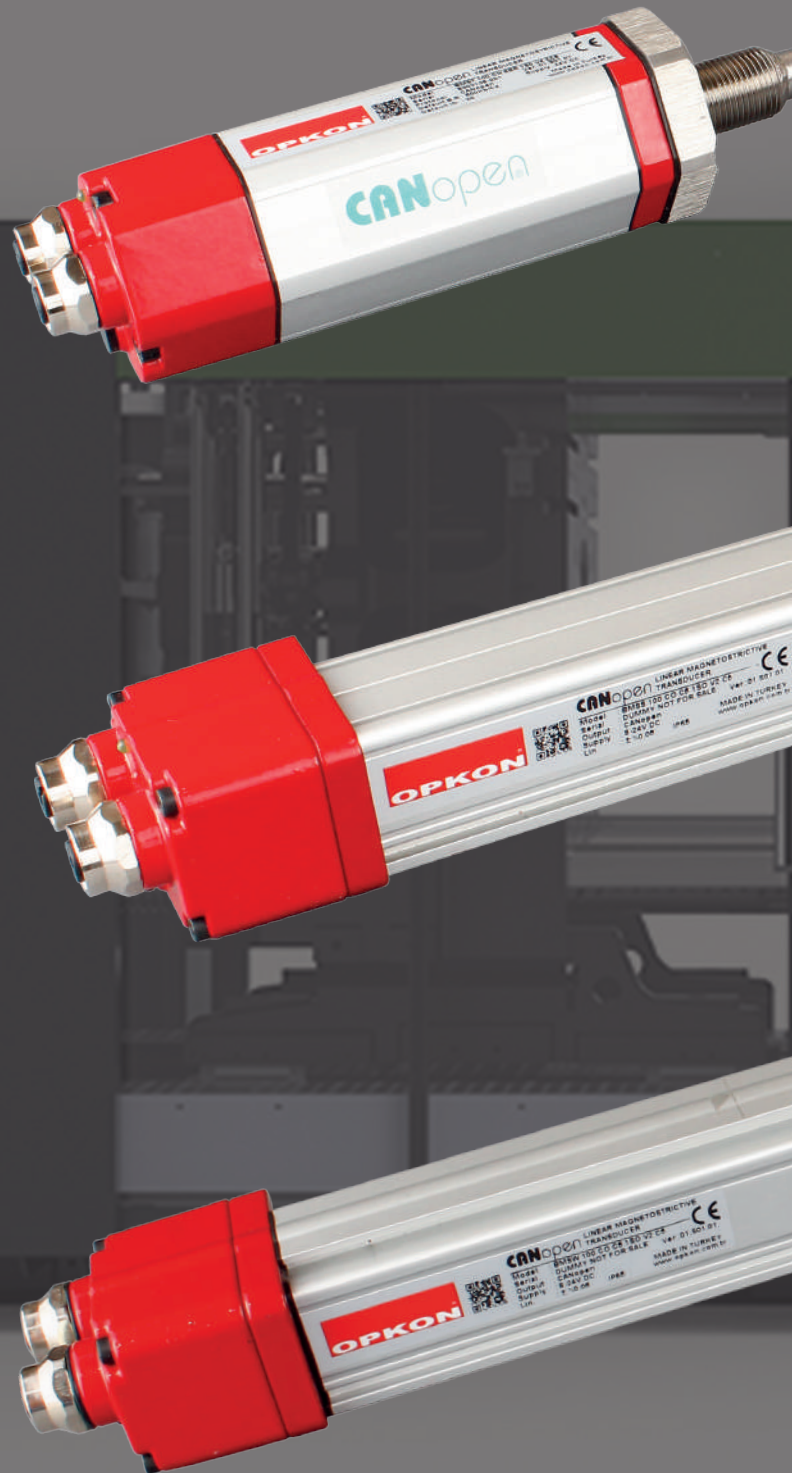
IBISS
INTERFACE

PROFI
BUS

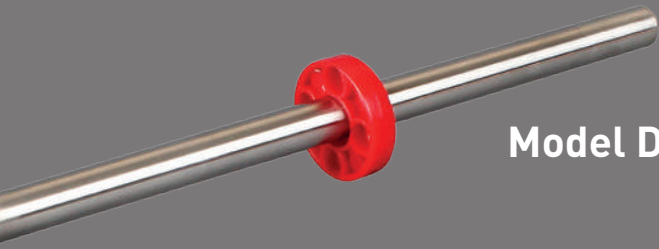
Modbus

EtherCAT®

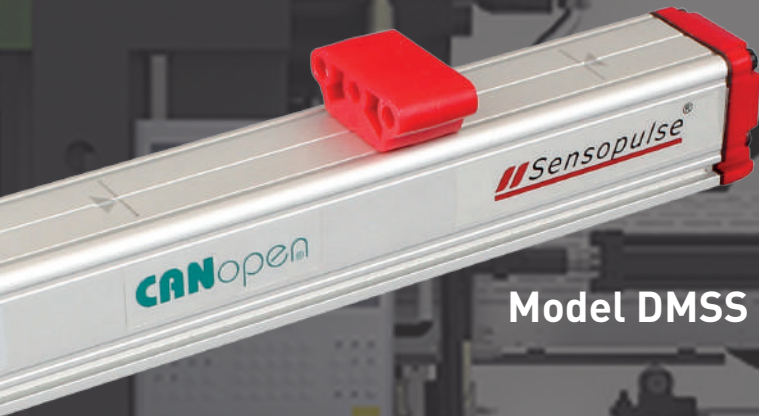
DIGITAL MAGNETOSTRICTIVE POSITION SENSORS



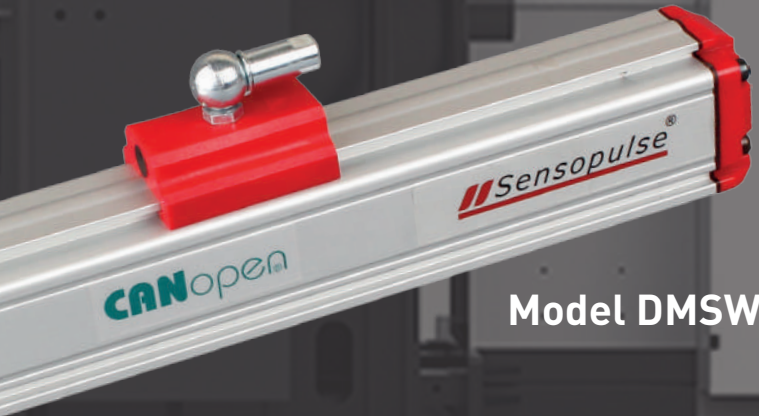
PLASTIC AND RUBBER
INDUSTRY SENSORS



Model DMST



Model DMSS



Model DMSW



TWO PLATEN
INJECTION MACHINES

HCC

Hot Runner Control Modules

- Microcontrolled based
- 16 bit high resolution A/D convertor
- 1° controlling accuracy
- PID control
- Soft start mode between 0 - 150°C (adjustable)
- High speed response for temperature deviations
- Working at standby mode (adjustable)
- 500°C max. Fe-Const (J type) thermocouple
- Thermocouple failure alarm on display
- Proportional working mode (without thermocouple)
- 250 V, 8 A relay for low and high temperature alarm contact
- Each channel has fuses and switches individually
- 25 A solid state relay output for each channel



DWEM

Metal Case Draw Wire Encoder

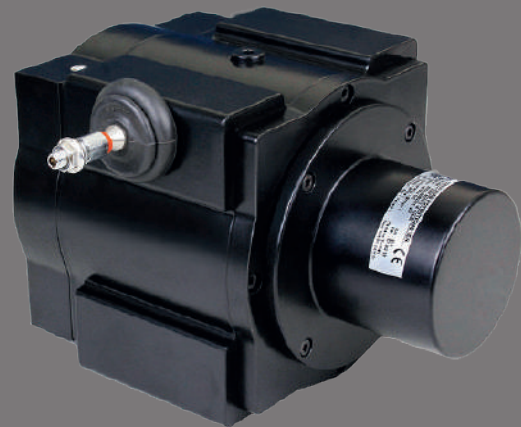
- Measuring range 100 - 8250 mm •
- Incremental 50 μm / 25 μm resolution •
- Push-Pull, TTL Linedriver or HTL Linedriver •
- Easy mounting •
- High protection degree (IP65) •



DWPM

Metal Case Draw Wire Potentiometer

- Measuring strokes 100 - 8250 mm
- 15 k Ω / 10 k Ω resistive type or
- 0-10V / 4-20mA, 0-20mA internal electronic circuit
- Easy mounting



For longer strokes
(above 8250 mm)
and special applications
please contact us.

Linear Sensor Production Range

Resistive Potentiometers

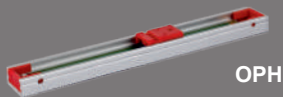
RESISTIVE
POTENTIOMETER



RTL



RPH



OPH



LPC



LSC



RTM



RTK



LPS

RESISTIVE
POTENTIOMETER



RTHF



RTHP



SOPH



SLPT



SLPC



SLPIS



SLPKS



SLPK



LMT / LMTIS



LRS

Draw Wire Potentiometers Draw Wire Encoders

RESISTIVE
POTENTIOMETRIC

INCREMENTAL



DWP

ANALOG V/mA



ERTL



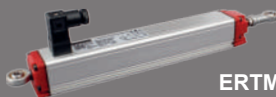
ELSC



ERPH



ELPC



ERTM

Magnetostrictive

MAGNETOSTRICTIVE

DIGITAL
MAGNETOSTRICTIVE



MSS



MSW



MST

CANopen

CANbus

SSI

BISS
INTERFACE

PROFIBUS

Modbus

EtherCAT



DMSW



DMST

WORLDWIDE SALES NETWORK



Headquarter R&D , Production

OPKON Optik Elektronik
Kontrol Sanayi ve Ticaret A.Ş.
Terazidere Mah. 29 Ekim Cad. No:34
Bayrampaşa / İstanbul / TÜRKİYE

Phone : +90 (212) 501 48 63
Fax : +90 (212) 501 48 83
Web : www.opkon.com.tr
E-mail : export@opkon.com.tr

Germany Subsidiary

SENSORMARKET GmbH
Graeffstrasse .5,
50823 Köln/GERMANY

Phone : +49 22159495400
Fax : +49 22159495402
Web : www.sensormarket.eu
E-mail : sales@sensormarket.eu

China Subsidiary

DANZI Sense Technology
(Shanghai) Co., Ltd.
Room 123 -B, F/1, No. 1000 Ziyue Road,
Minhang District, 200240 Shanghai CHINA

Hotline: 400 8050 889
Phone : 021-64091719
Fax : 021-64091713
Web : www.danzisensors.com.cn
E-mail : marketing@opkonchina.com